

The Vega-Park Household

D4 RESIDENTIAL DESIGN MIDTERM

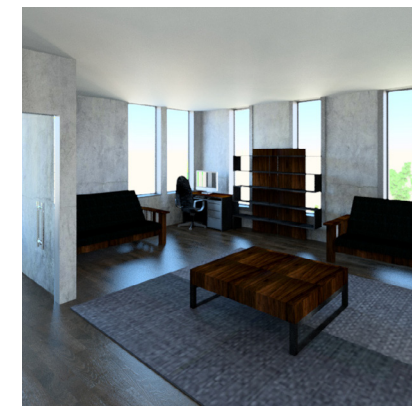


TABLE OF CONTENTS

COURSE INTRODUCTION AND DESIGN TOOLS DEVELOPMENT

A.1 Human Behavior Charrette

A.2 Original Design Overview

PROFILING AND RESIDENTIAL HOME

A.3 Client Profile

A.4 Site and Building Analysis

A.5 Program Definition

A.6 Design Concept

A.6.2 Space Planning

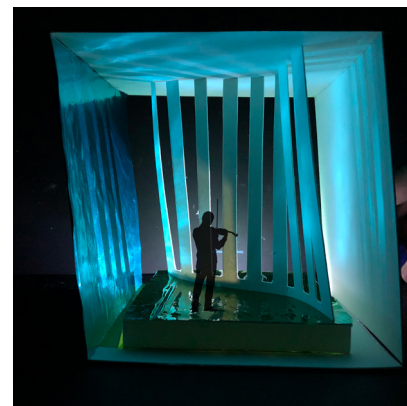
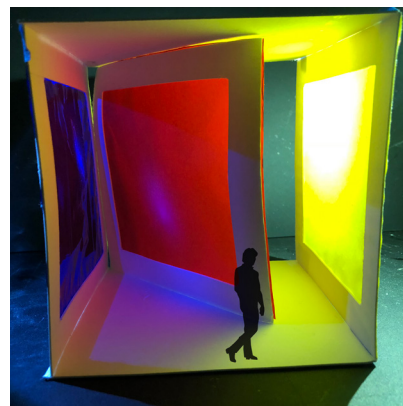
References and Sources

COURSE INTRODUCTION

This is an introductory-course for the Interior Architecture Graduate Program. This design studio introduces students to the planning of interior environments, addressing both the contents of the environments and the process of interior space planning.

Topics include the making of rooms, the design of effective spatial sequences, functional relationships among project parts, arrangement of furniture, planning effective circulation systems, making spaces accessible, and designing safe environments with efficient emergency egress systems.

A.1 Human Behavior Charrette



A.1 HUMAN BEHAVIOR CHARRETTE

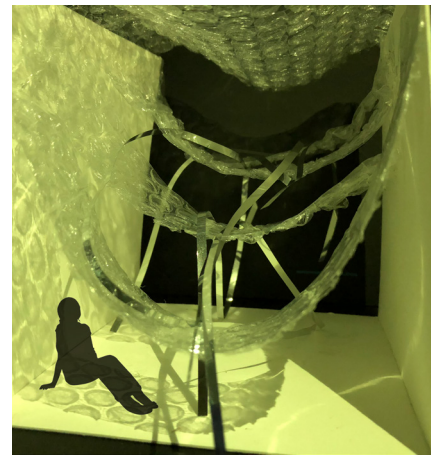
The purpose of this assignment was to create ten different spaces that evoke a certain mood. We used color, shape, and lighting to determine the emotion of the space we wanted to make. Human figures were added into the spaces to give a sense of scale. This project revealed that while some behaviors have similar aesthetics, there are multiple ways to interpret them.



Anxiety



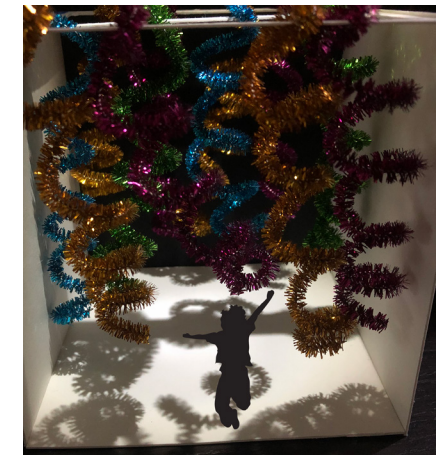
Calm



Stimulating



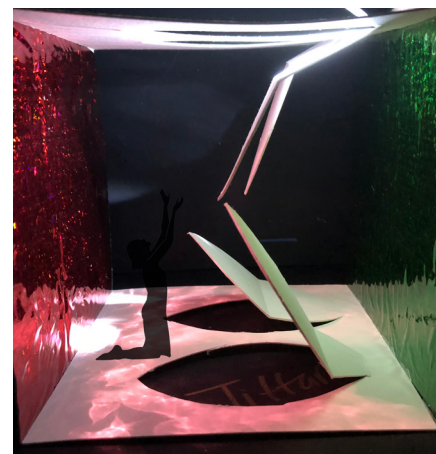
Whimsical



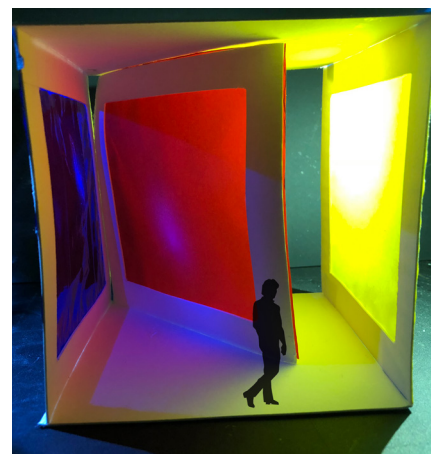
Zany



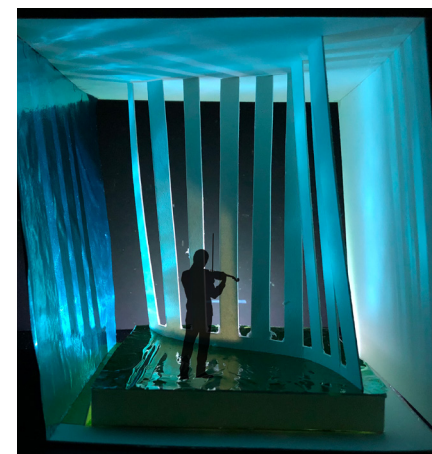
Lonely



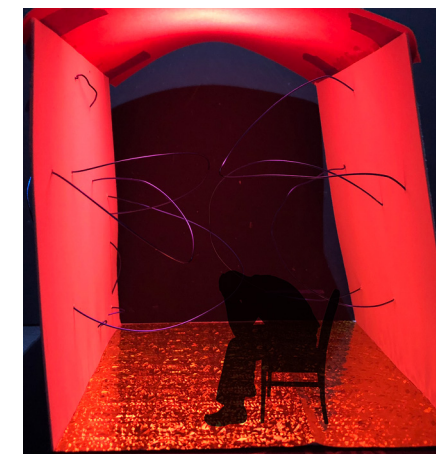
Longing



Creative

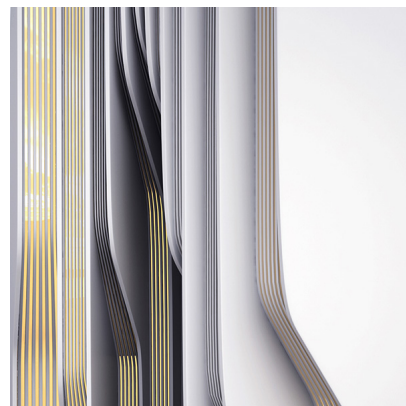


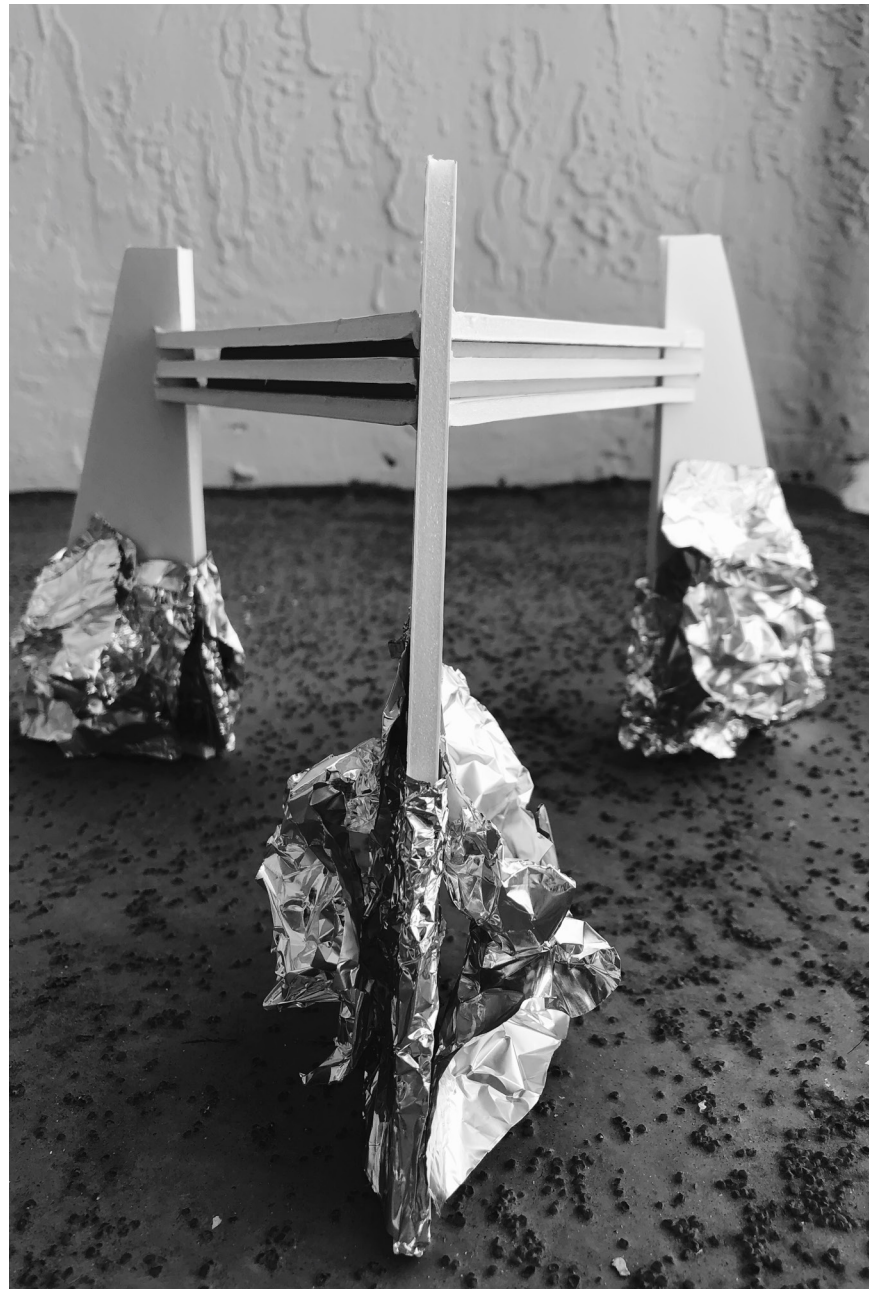
Serene



Frustration

A.2 Original Design Overview





CONTRAST



HARMONY



DOMINANCE



A.2 ORIGINAL DESIGN OVERVIEW

This assignment focuses on Roman Vlasov's concept work. By using his concepts for inspiration, we were asked to create something that would tie into our residential design project.

I created a chair using three principles of design that I interpreted from Vlasov's work. This project showed that there are many ways to successfully take inspiration from another's work while avoiding plagiarizing it.



LINE
CONCEPT 57

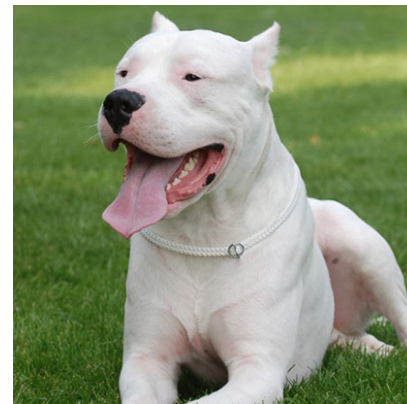


DIRECTION
CONCEPT 37



REPETITION
CONCEPT 687

A.3 CLIENT PROFILE



A.3 CLIENT PROFILE

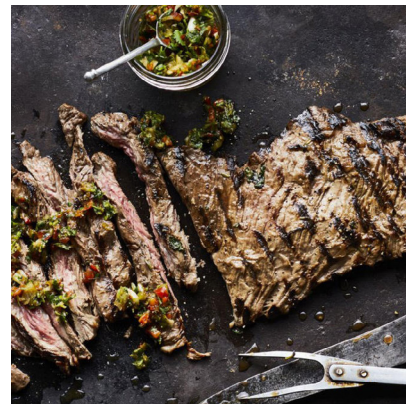
Knowing your client's needs and lifestyle is one of the first steps in the design process.

We were given a grocery list to deduce basic information about our client- such as profession and ethnicity. From there, it was our job to fill in the blanks and create a detailed client profile.

On my list there was an icon for Boca Juniors- an Argentine Soccer Club. Underneath was the recipe for Guacho Steak with 4-herb Chimichurri.



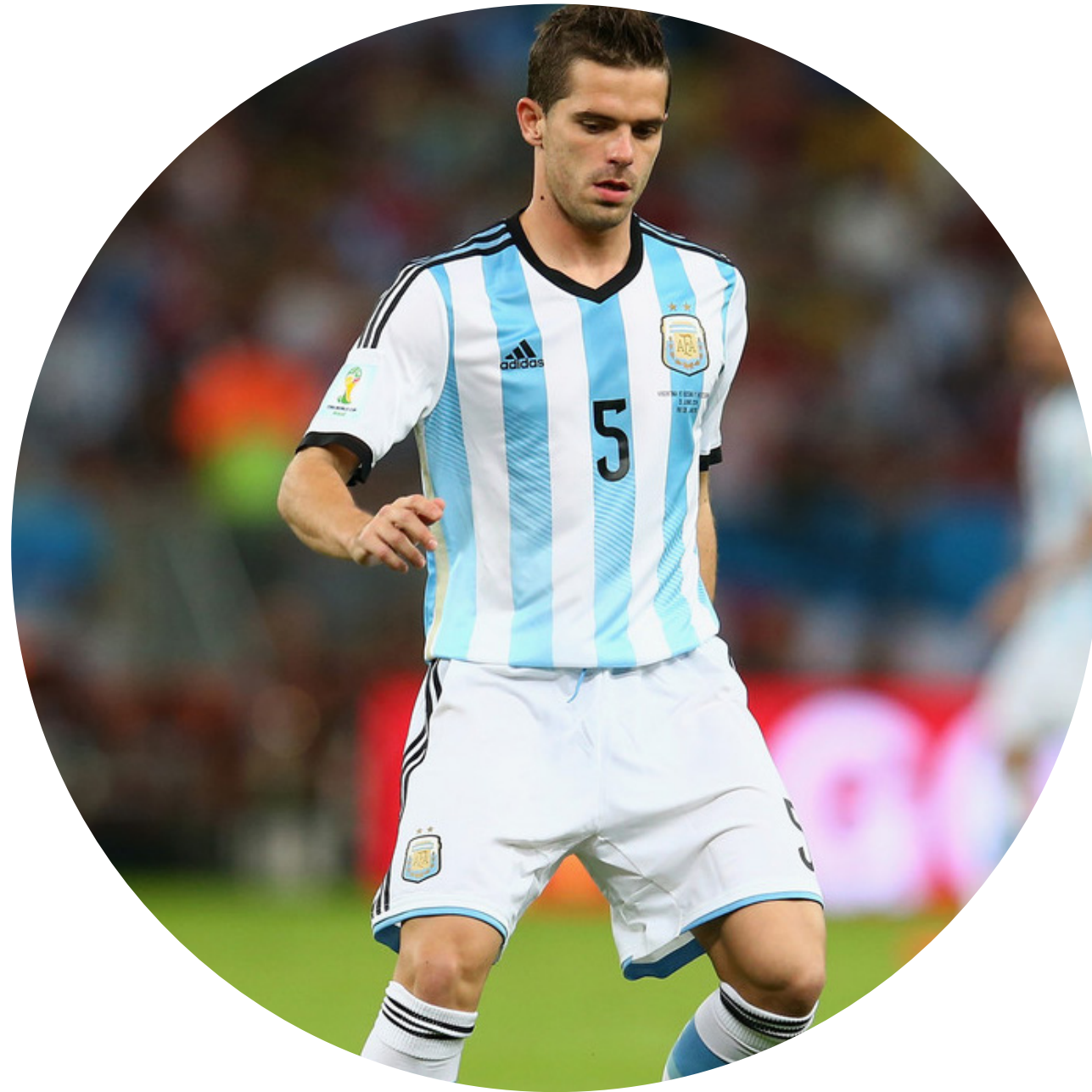
+



=

?

Mateo Vega



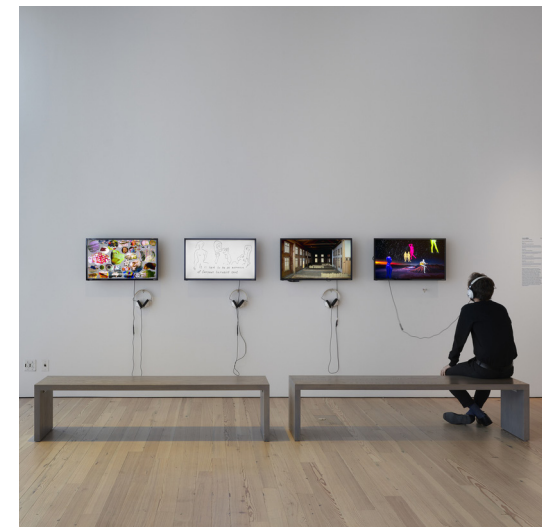
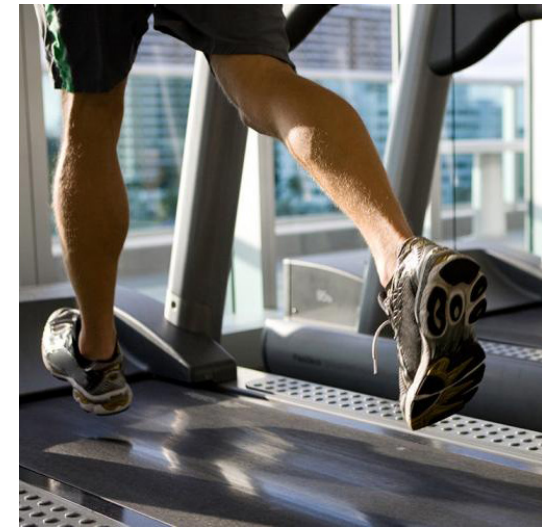
Born: April 10th, 1986 (31) in Buenos Aires, Argentina

Education: Buenos Aires English High School

Occupation: Defensive Midfeilder for Argentine National Soccer Team

Significant Other: Tae-Min Park (husband)

Net Worth: \$24.1 Million



Tae-Min Park



Born: November 6th, 1981
(36) in Seoul, South Korea

Education: Joogbu University,
Media Arts

Occupation: Actor

Significant Other: Mateo
Vega (husband)

Korean Drama Awards: Top
Excellence Actor



Saint



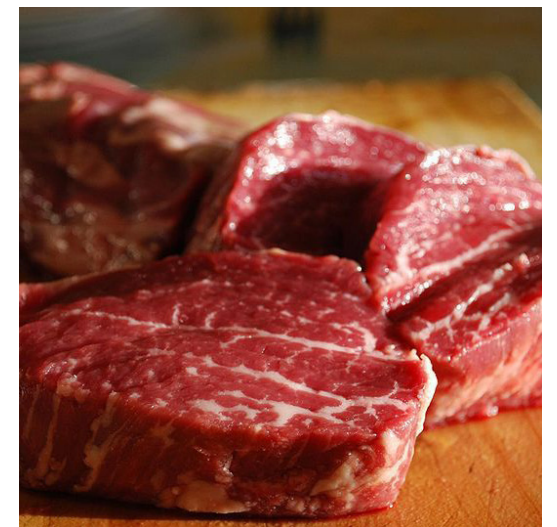
Born: August 22nd, 2016 (2)

Education: Doggo University,
Dog-Human Relations

Occupation: Meat Enthusiast
and Taste Tester

Family: Two dads, neighbor
who gives treats

Accomplishments: Knows sit,
high-five, has world's biggest
smile



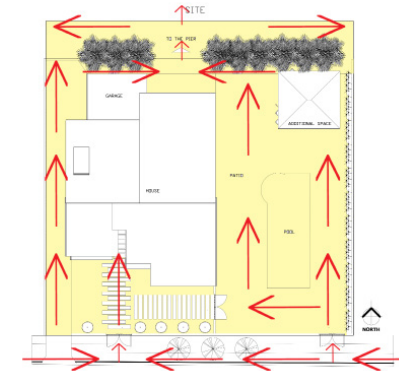
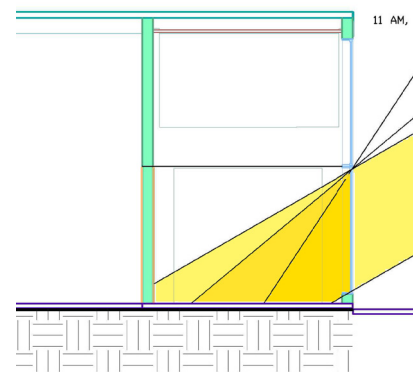
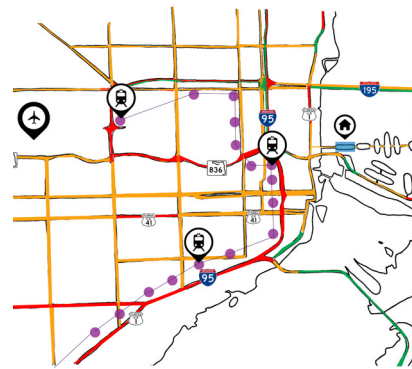
DESIGN GUIDELINES FOR THE VEGA-PARKS

The Vega-Parks are a family that enjoy hosting dinner parties with their peers. Both cultures, Argentine and Korean, love to barbecue meat with family and friends. Mateo and Tae-Min both have an appreciation for the arts and collect pieces that they display in their home. Mateo leads an athletic lifestyle that requires him to work out daily. Their dog, Saint, is their pride and joy.

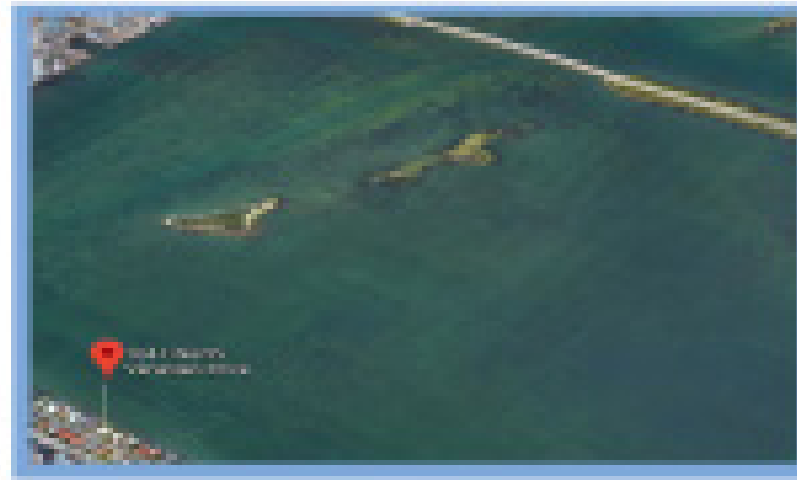
1. Create a large space for the kitchen.
2. Set aside enough space for an indoor gym/workout area.
3. Have an art gallery/exhibition.
4. Convert the outdoor patio space into a barbecue area.
5. Have a small room for the dog.

A.4 SITE AND BUILDING ANALYSIS

1041 N VENETIAN DR MIAMI BEACH, FL 33139
SINGLE FAMILY HOME | RESIDENTIAL PROJECT

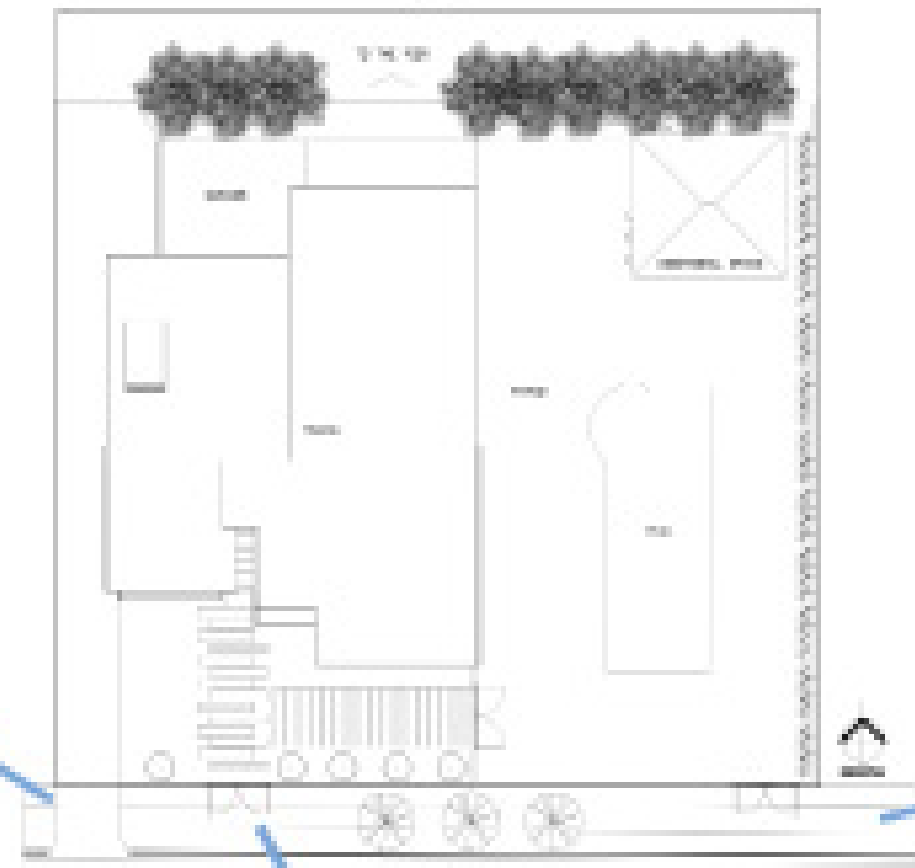


Views



An ideal location with scenic views on North Venetian Drive. The site overseas the Intra Coastal waterways and the Julia Tuttle Causeway.

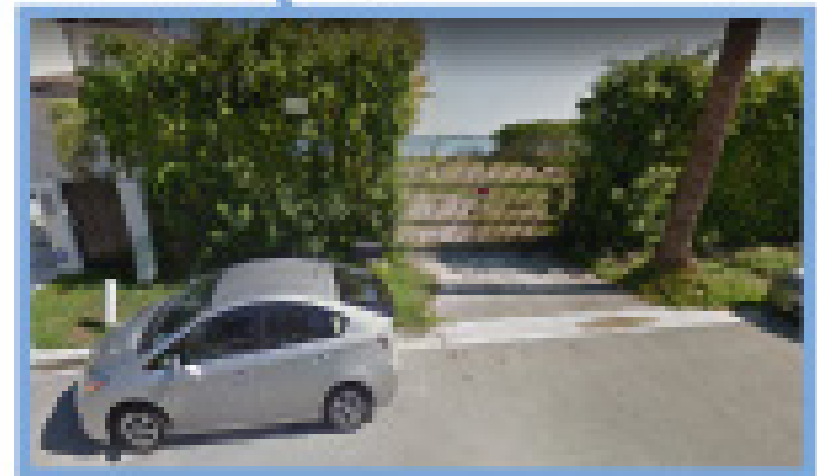
JULIA TUTTLE CAUSEWAY



SOUTH-WEST VIEW



SOUTH-EAST VIEW



FRONTAL VIEW

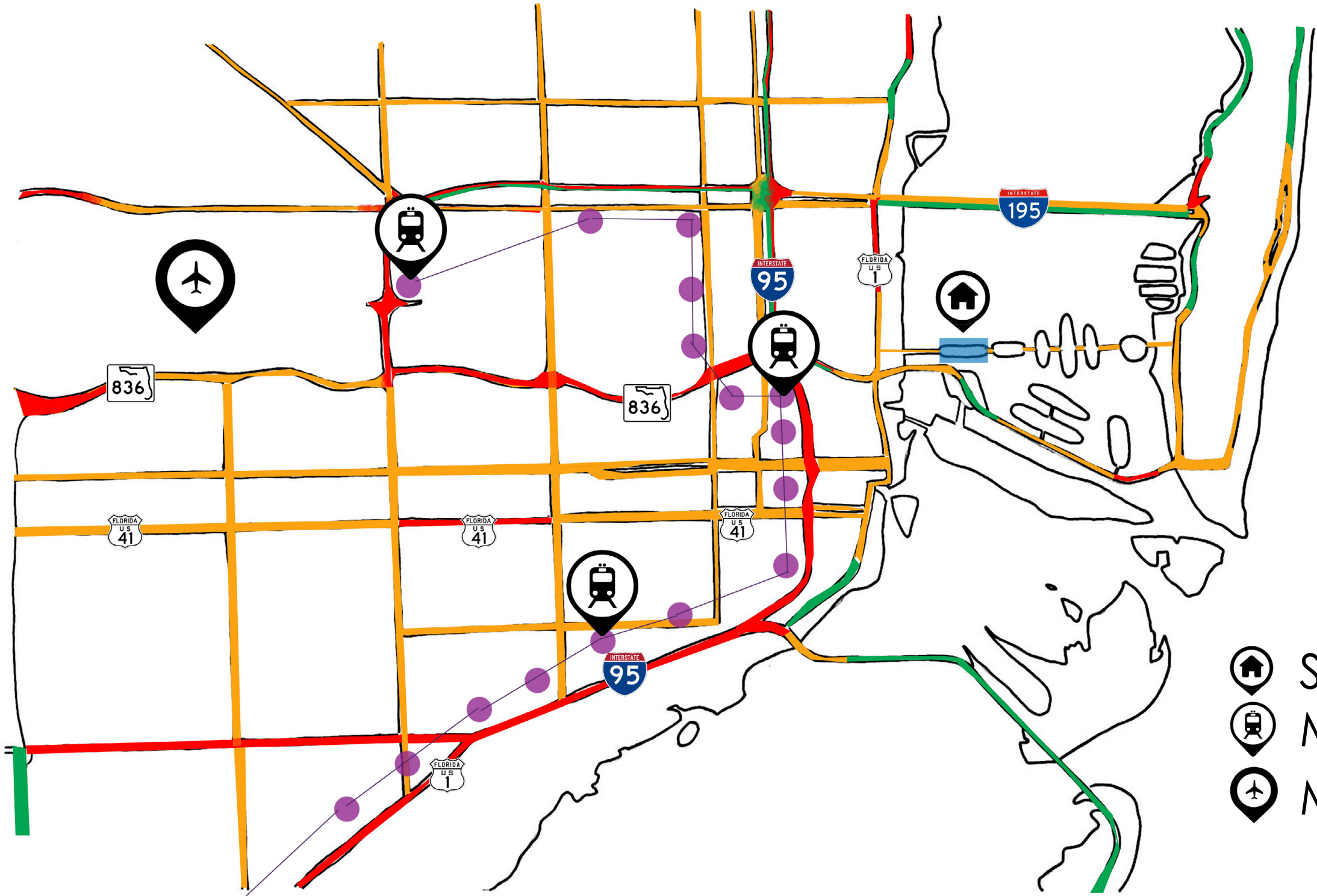
Location & Boat Traffic



1041 N VENETIAN DR MIAMI BEACH, FL 33139





Accessibility- Miami @ 5:30 PM, Rush Hour



At 5:30 PM, a majority of stateroads and highways experience moderate to extremely slow traffic.

Problematic roads include I95 (SR 112), The Dolphin Expressway (SR 836), Biscayne Boulevard (US 1), and the 195.

-  SLOW TRAFFIC
-  MODERATE TRAFFIC
-  FAST TRAFFIC
-  METRORAIL PATH

-  SITE
-  METRORAIL STATION
-  MIA AIRPORT

Noise Analysis



1041 North Venetian Drive is within proximity to various high-traffic roads.

The loudest roads include the MacArthur Causeway and NE 15th Street.

Distant noise comes from the Intracoastal Waterway and SR 112.

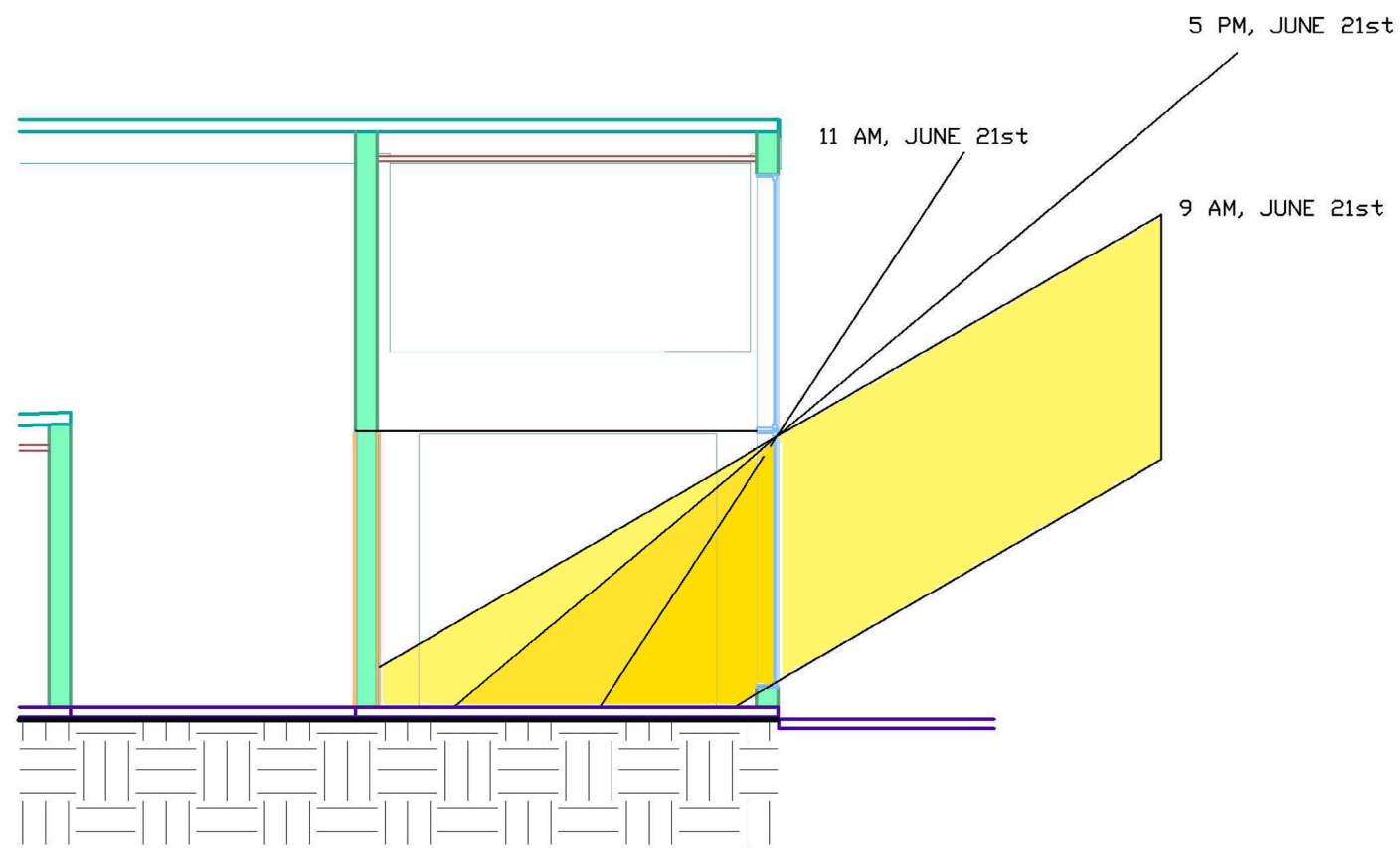
The farthest noise comes from I95 and the the 395 highways.

-  CLOSE PROXIMITY
-  DISTANT PROXIMITY
-  FAR PROXIMITY

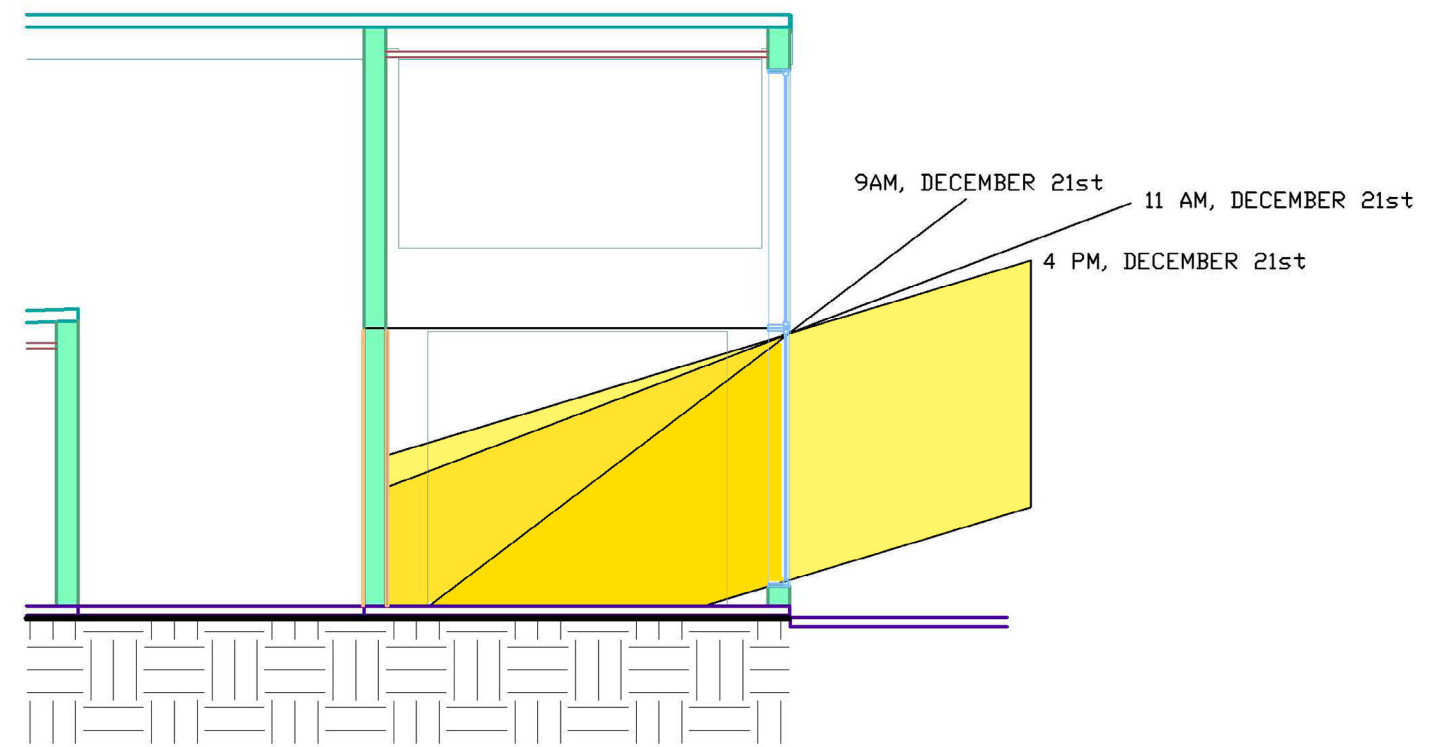
Sun Path Diagrams- East

Since there are only two seasons in Florida, these diagrams depict the rays of the sun during June and December.

During winter the rays of the sun penetrate deeper through the window, while in the summer the rays are more concentrated.

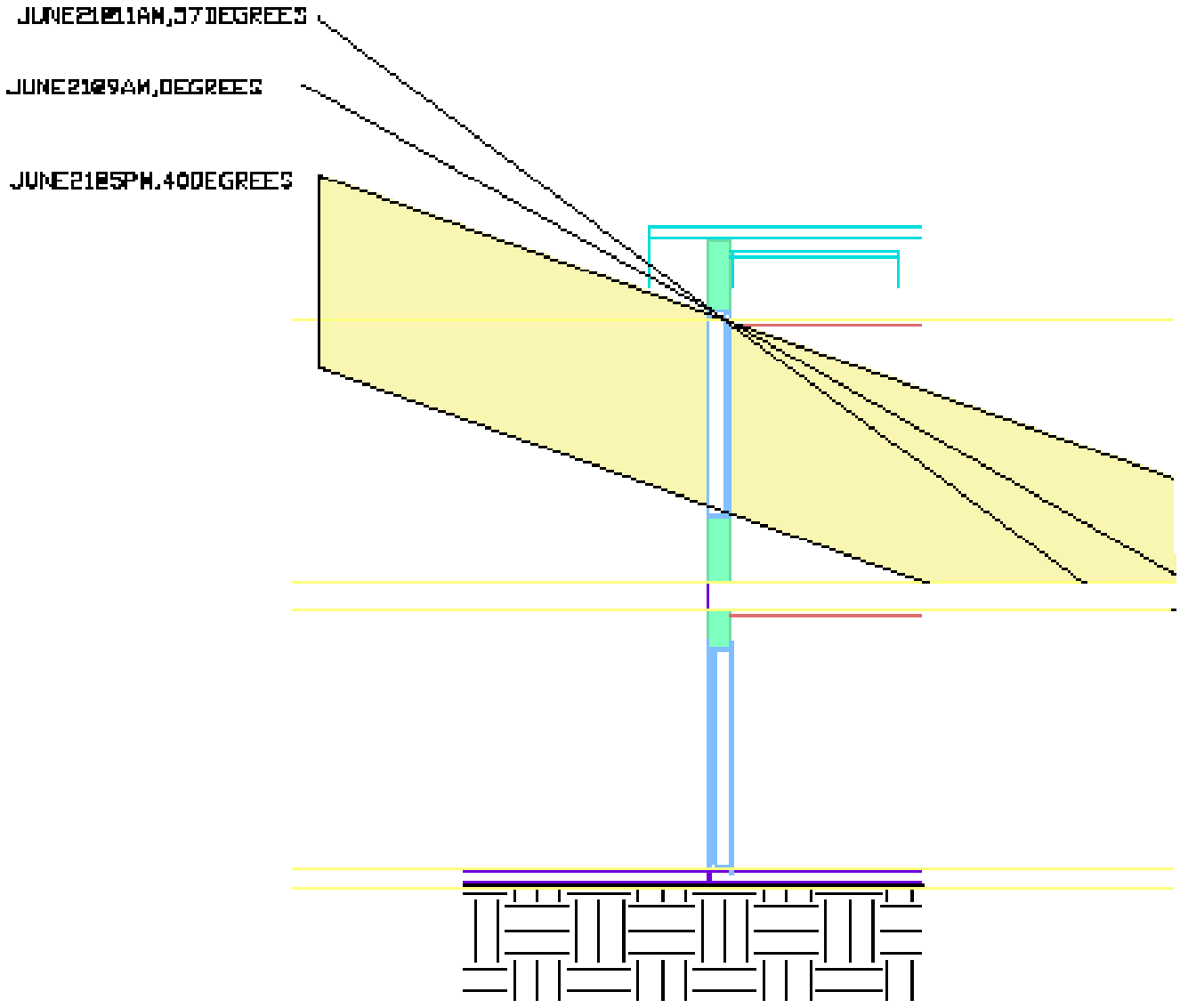


SUMMER

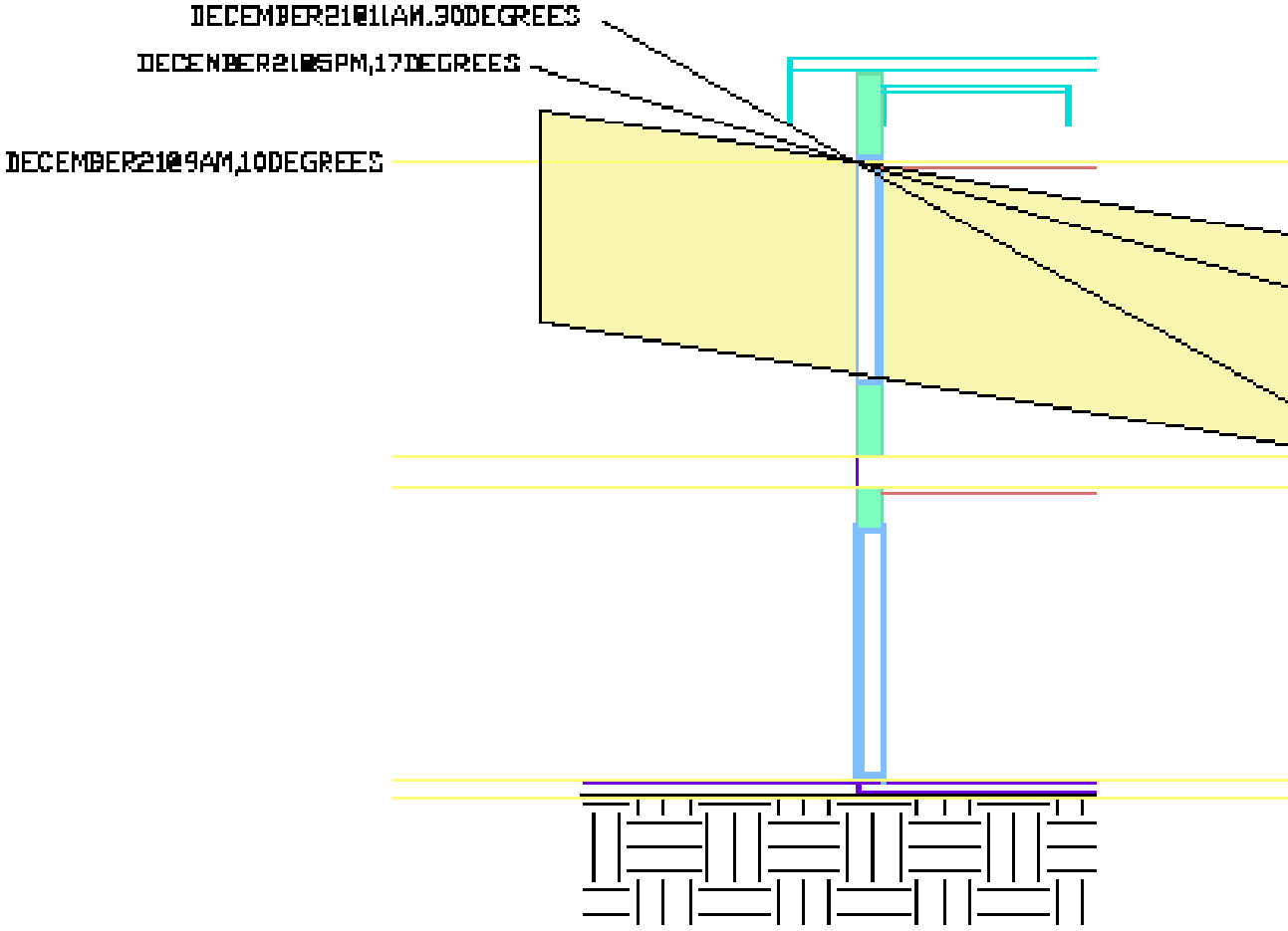


WINTER

Sun Path Diagram West

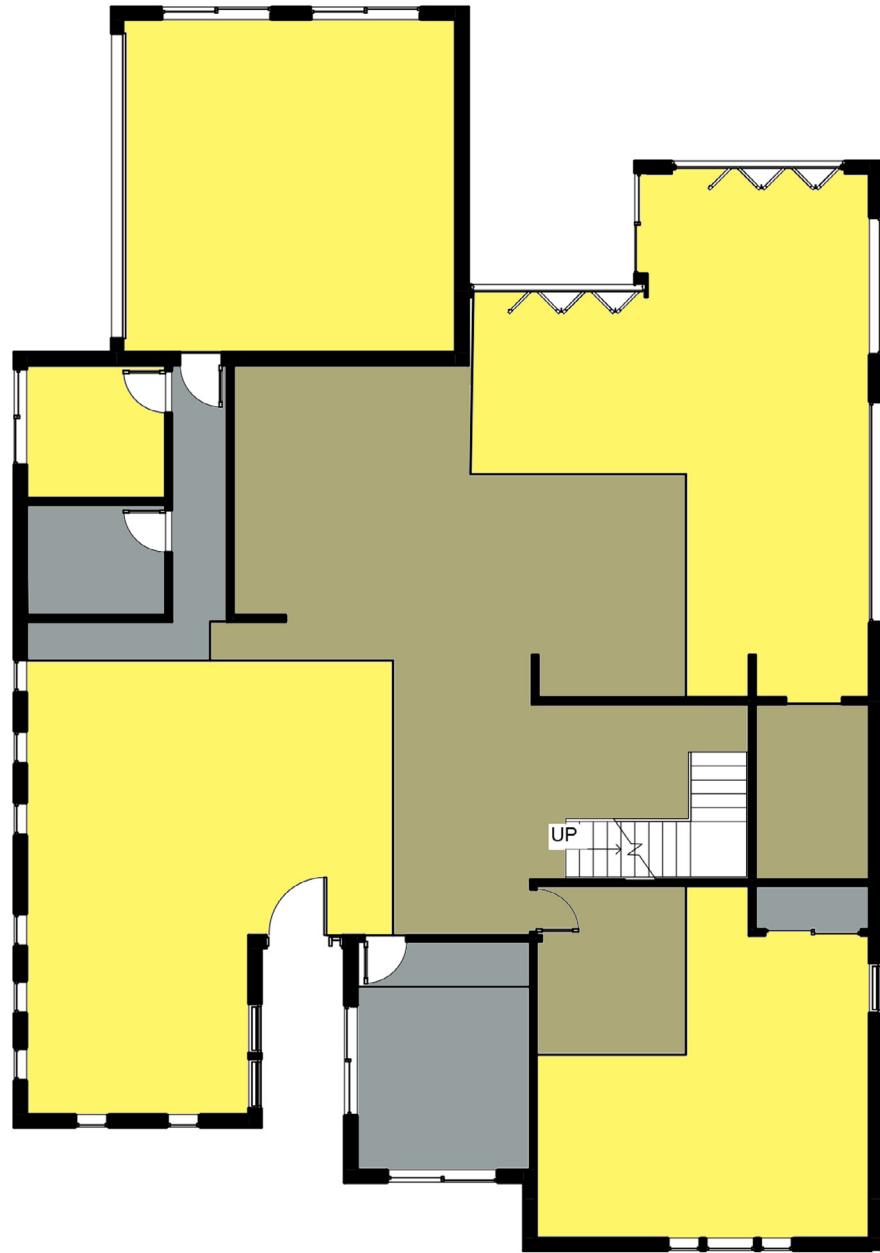


Summer

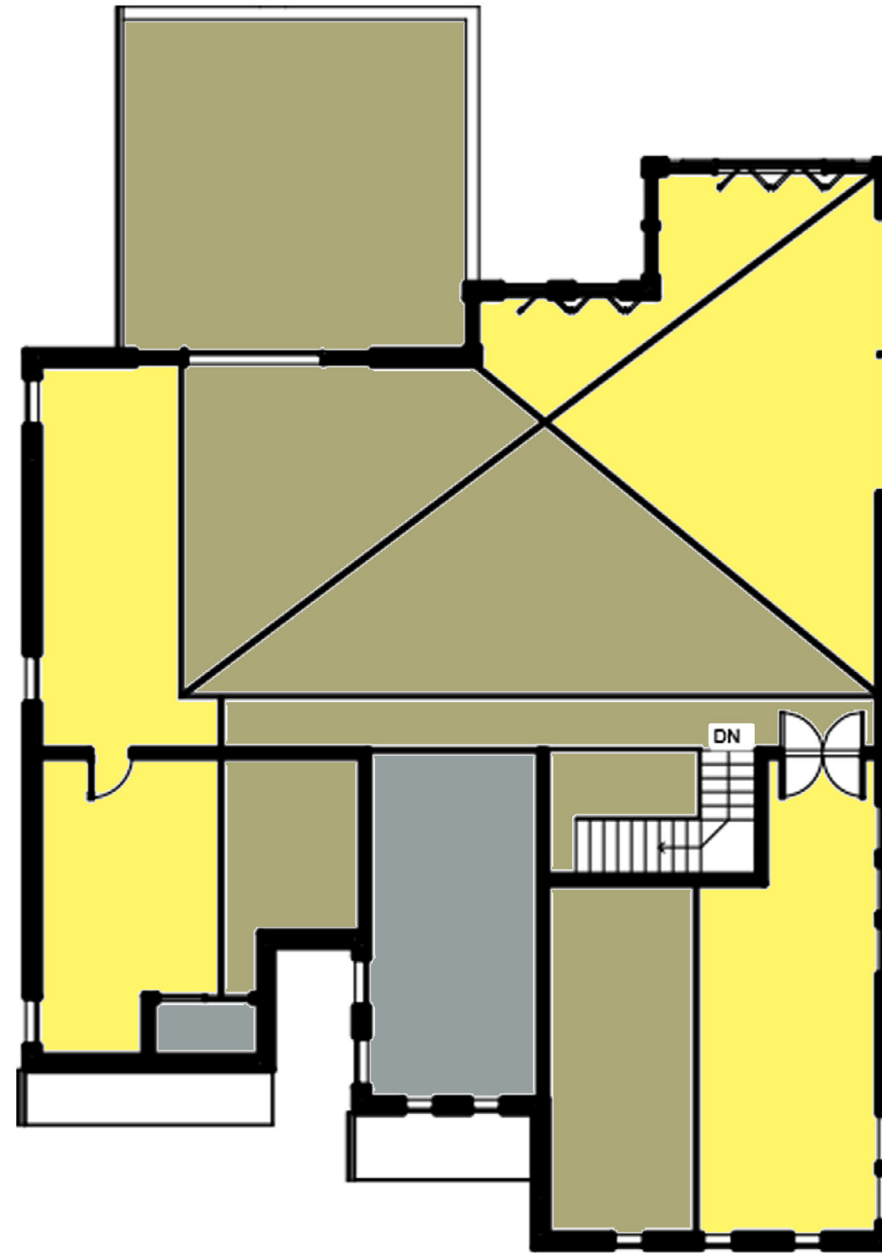


Winter

Daylight Analysis



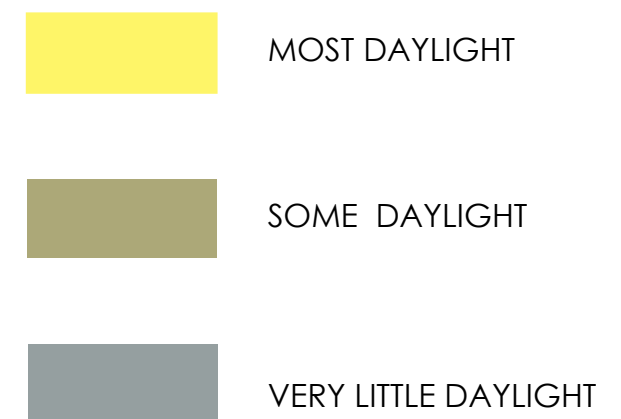
GROUND PLAN



SECOND FLOOR

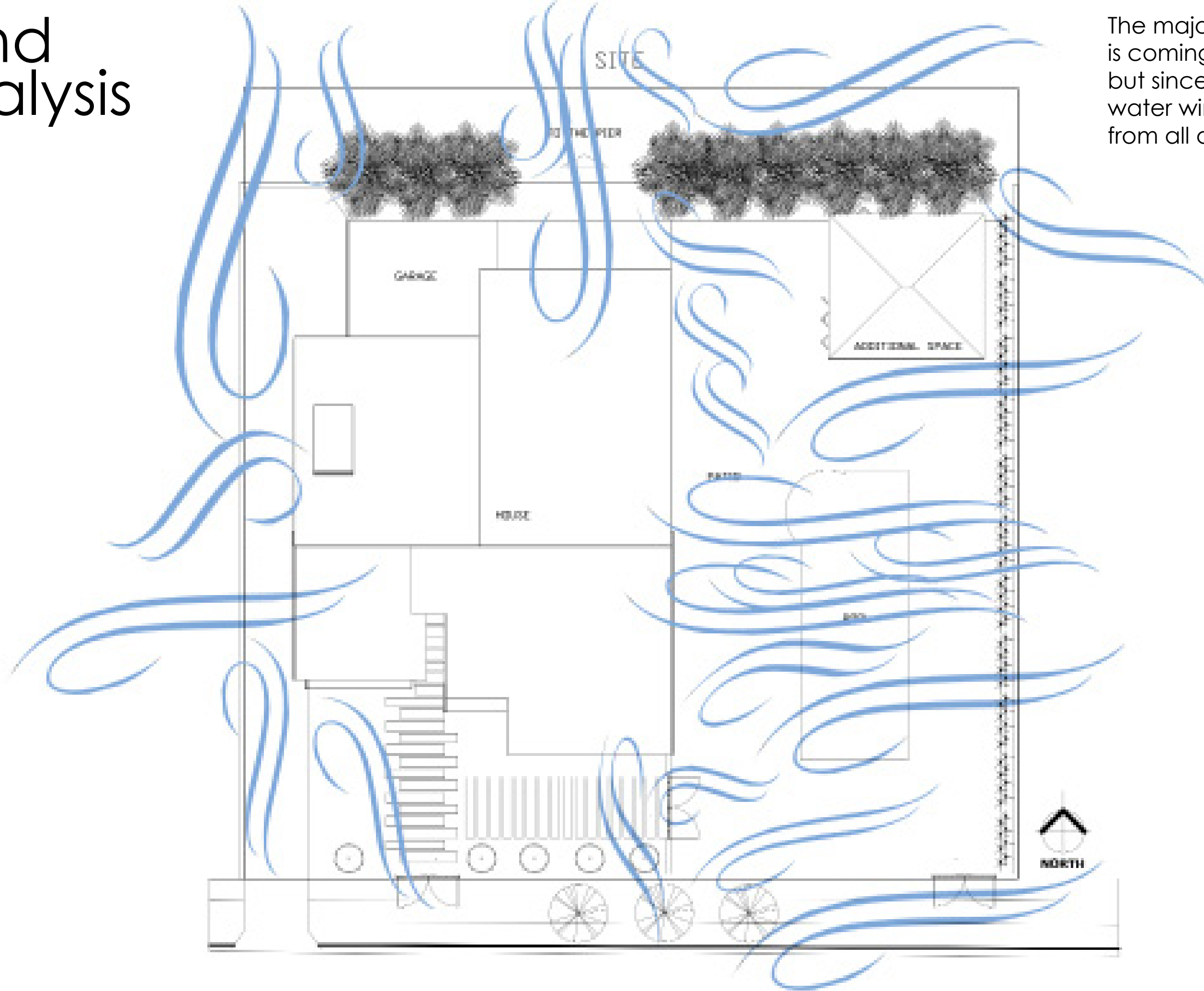
A majority of the house experiences strong daylight on the east and west facades.

The middle of the house experiences some daylight, while smaller spaces such as closets and bathrooms experience very little daylight.



Wind Analysis

The majority of the wind is coming from the East, but since the site is on the water wind can come from all directions.



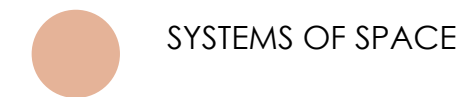
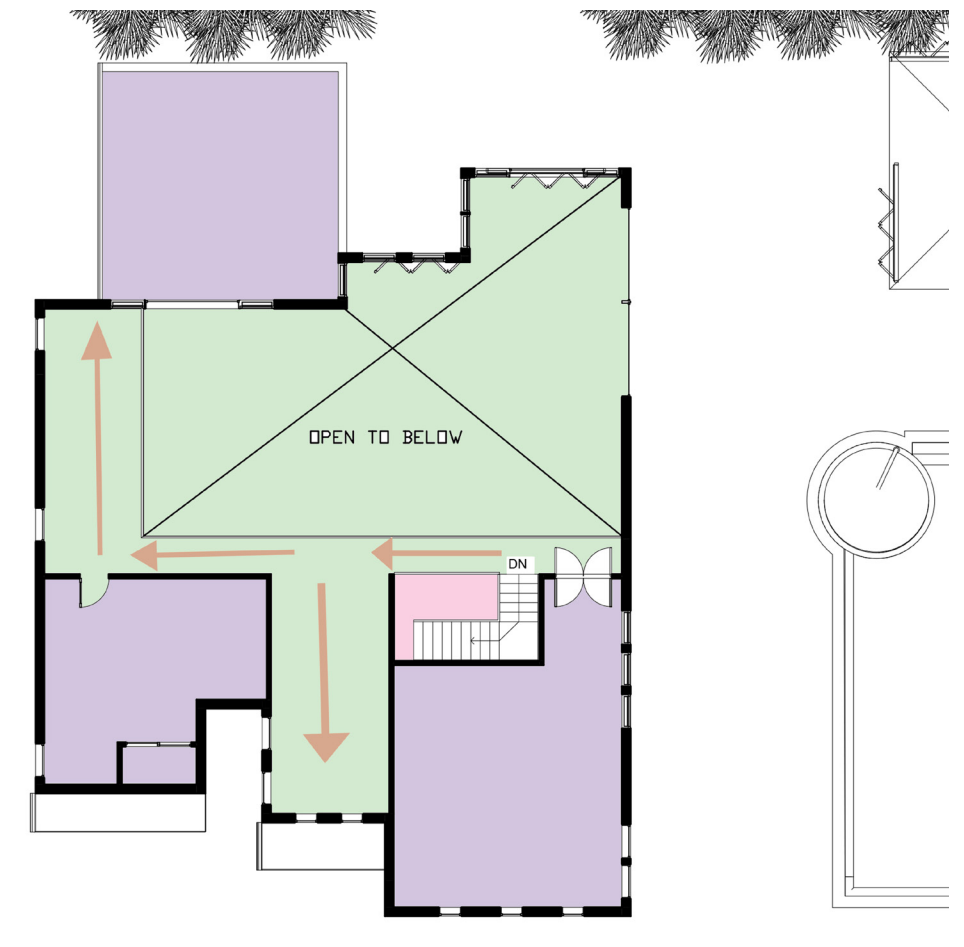
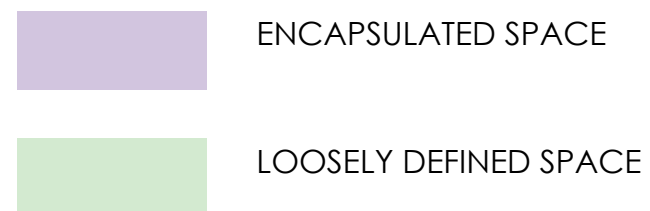
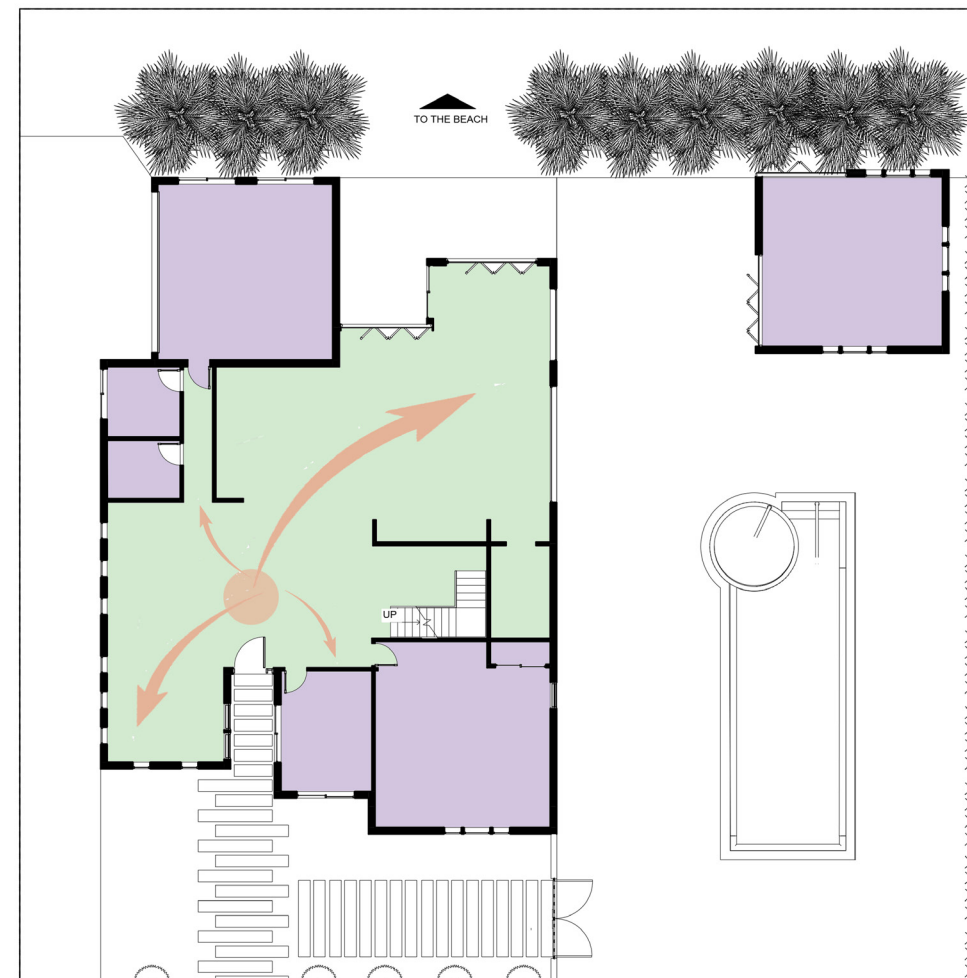
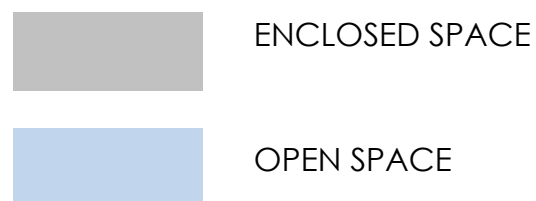
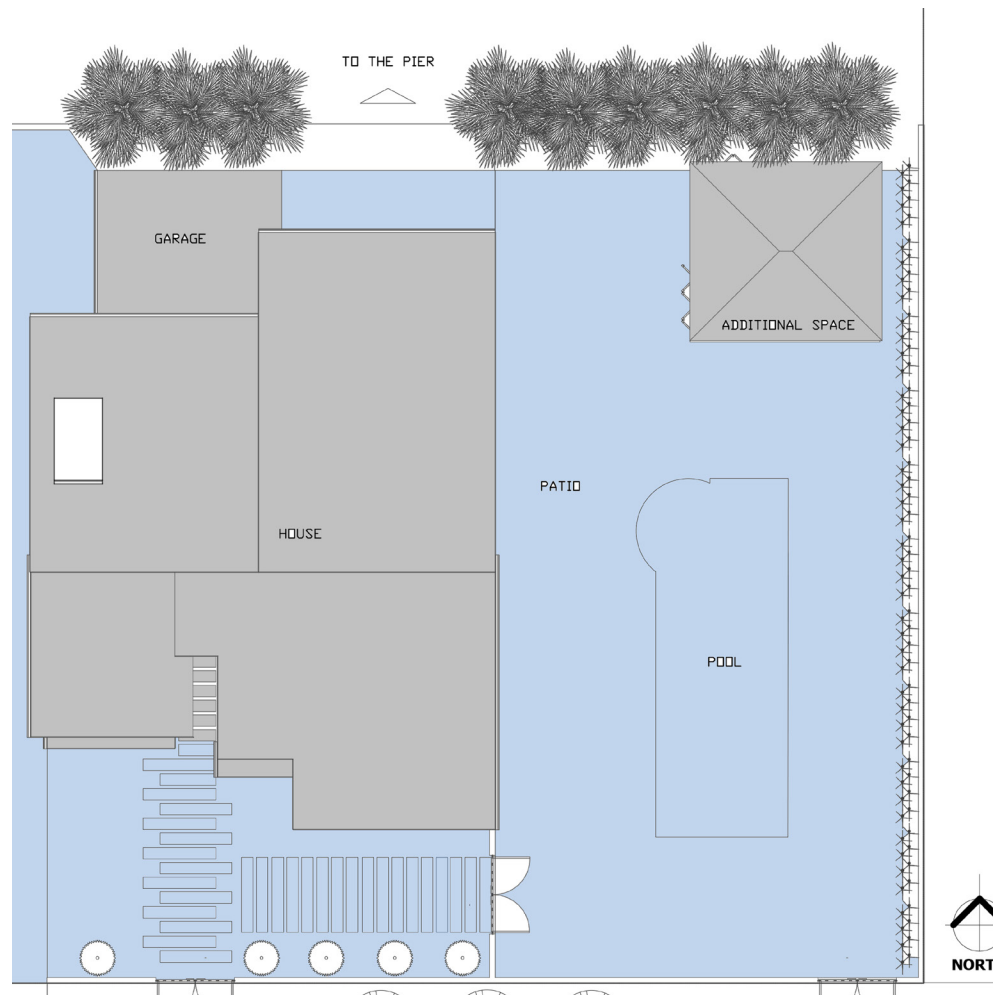
Spatial Analysis

Encapsulated Space: a fully sealed room with full walls on all sides, a floor, a ceiling, and no openings.

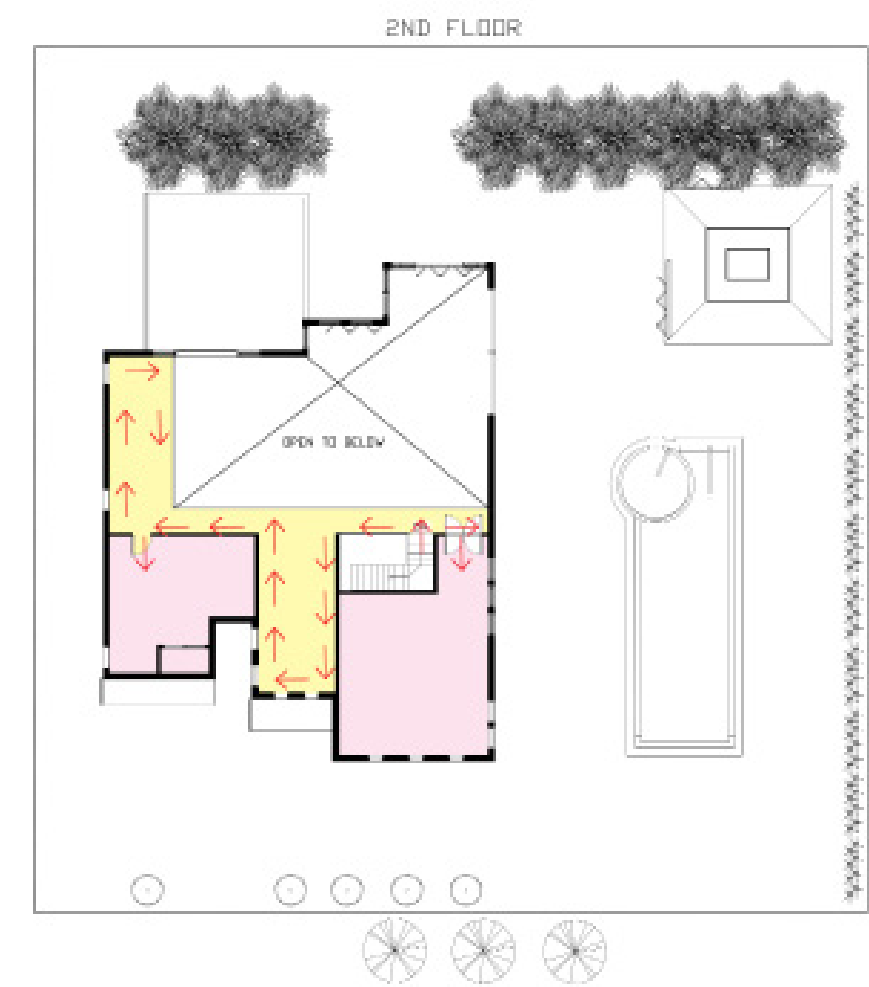
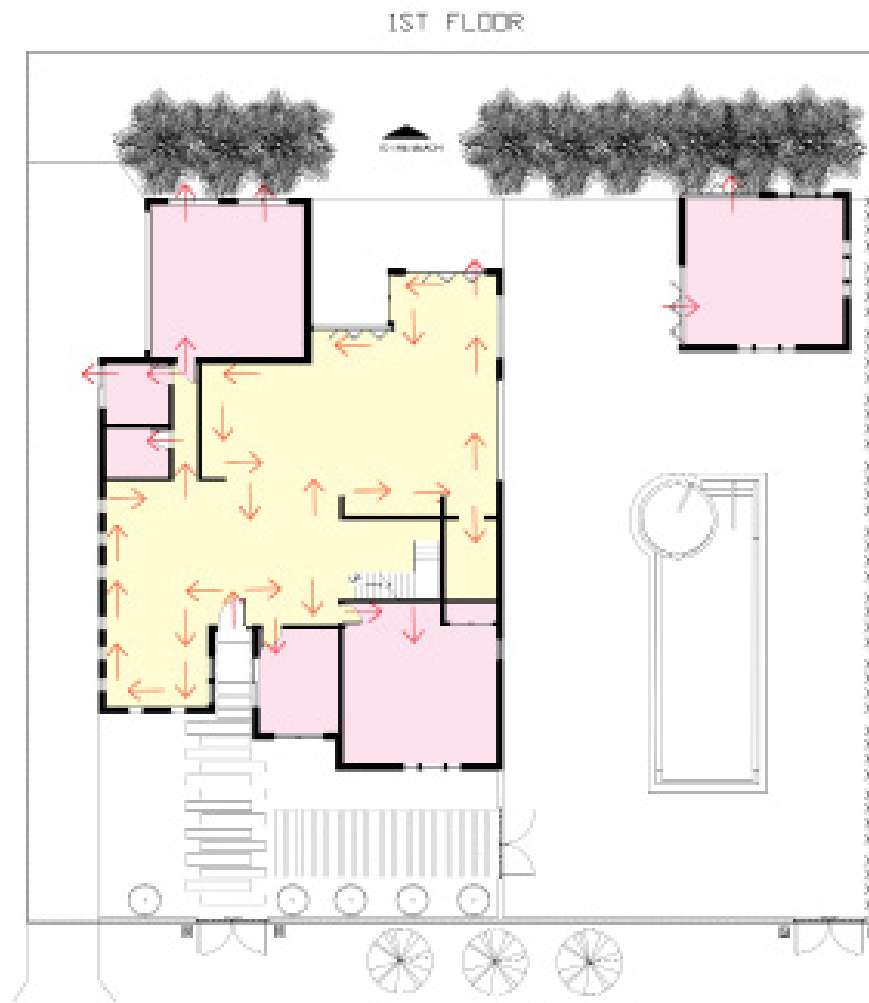
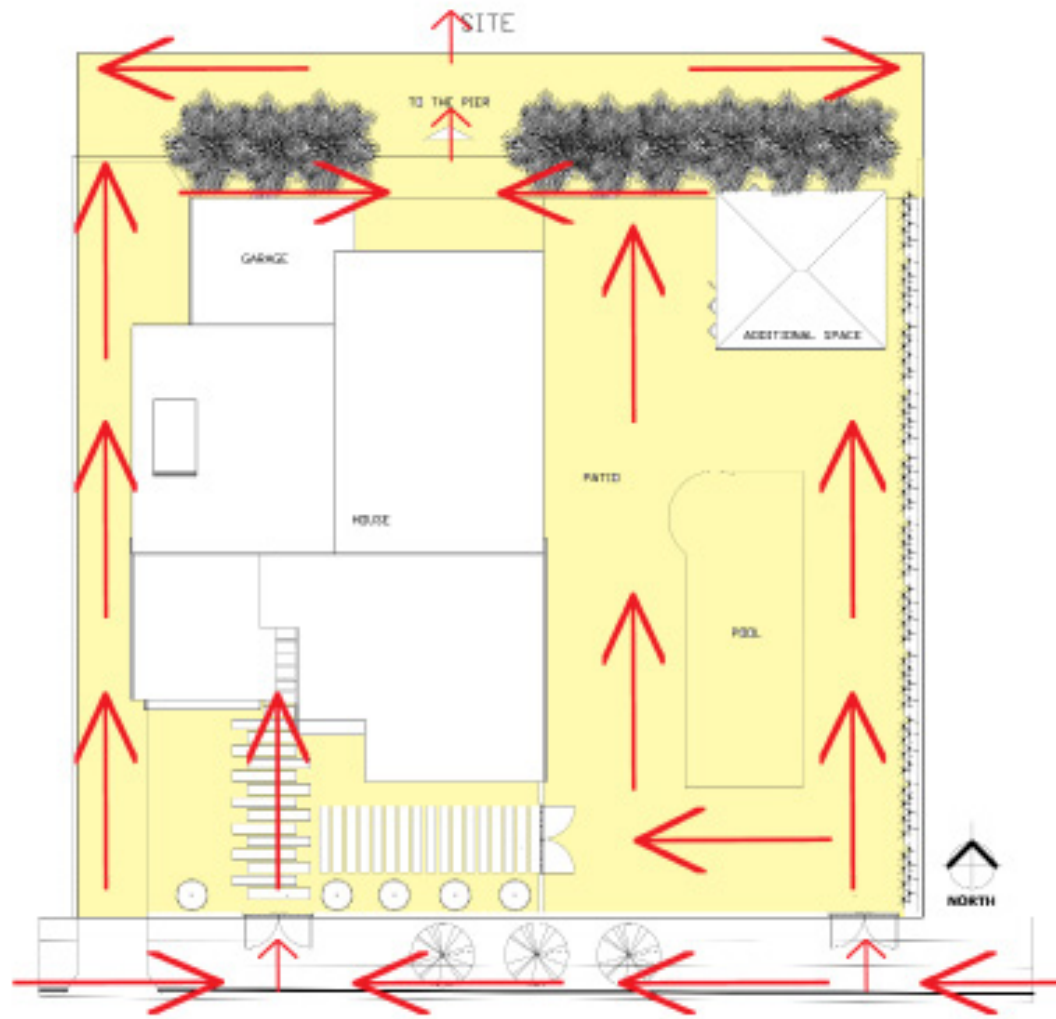
Loosely Defined Space: implied or suggested space, can be denoted by definition of corners and providing planar definition from above or below via floor and ceiling changes.

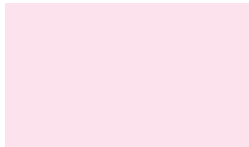
Radial System: characterized by linear routes that emanate radially from a common center.

Linear System: consisting of linear circulation with spaces on one or both sides.



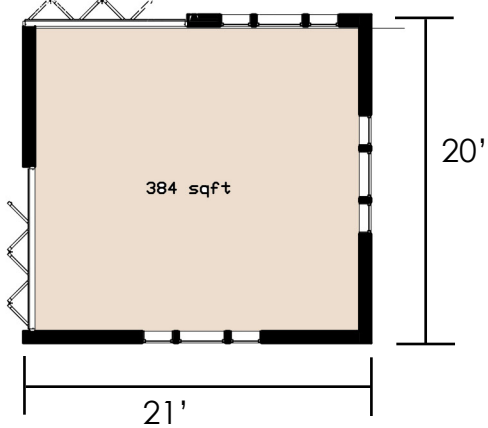
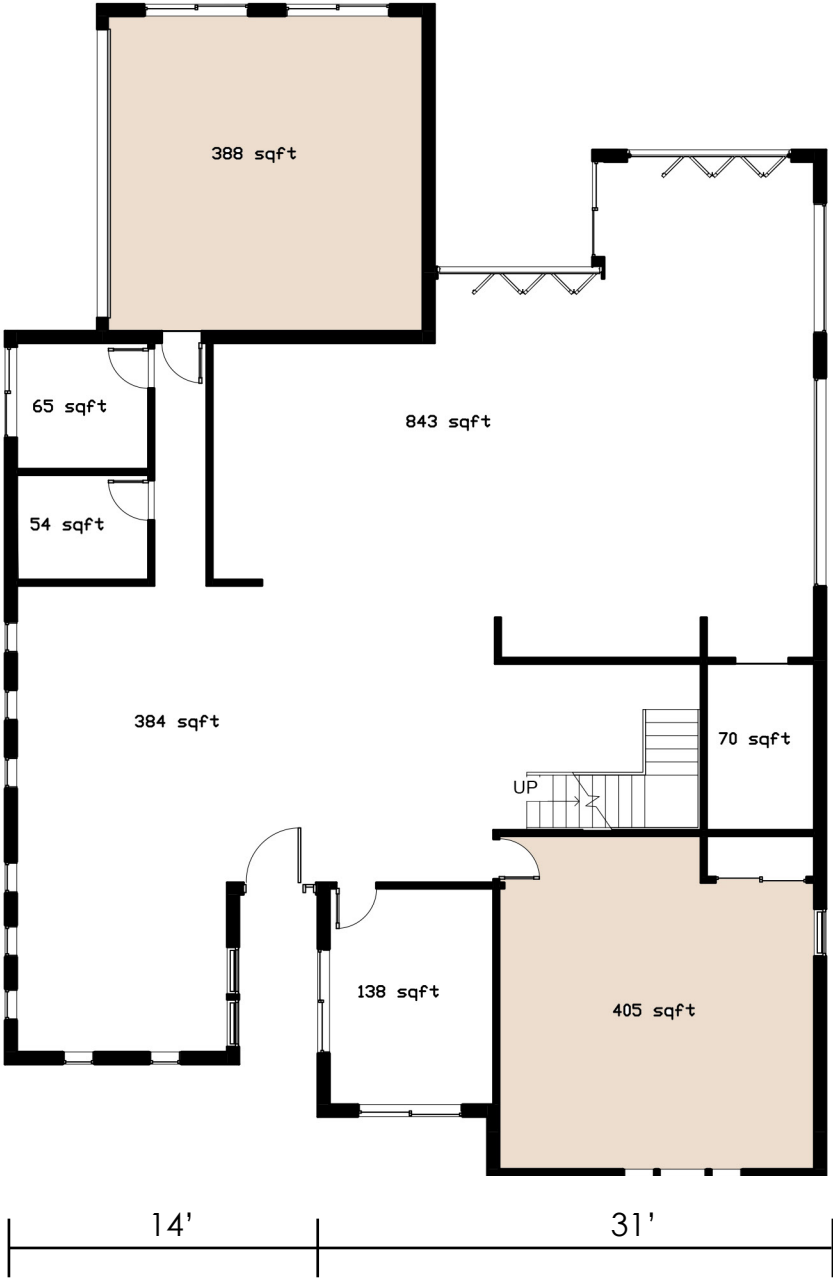
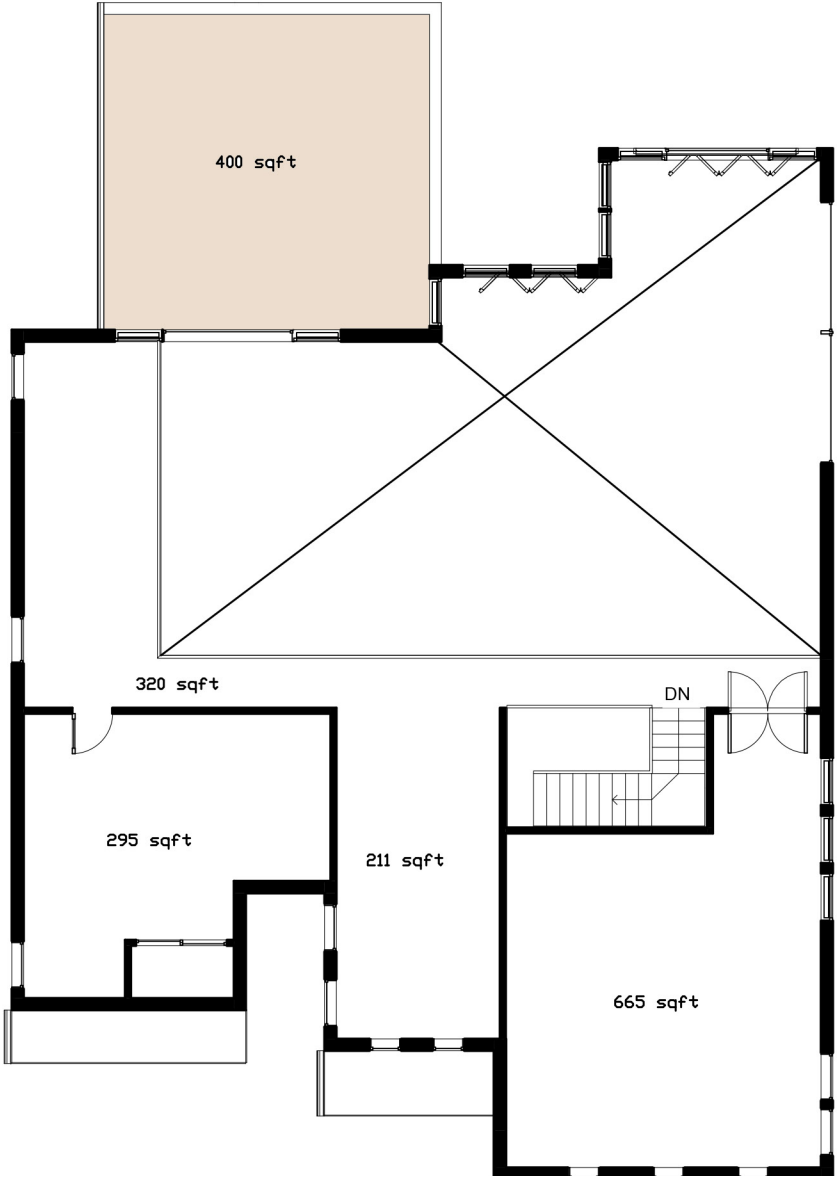
This plan has a combination of horizontal and vertical circulation paths that cross through private and public spaces. This site is composed primarily of public spaces with some private spaces which could be zoned mainly for bedrooms and bathrooms.



-  Public Spaces
-  Private Spaces

Square Footage Analysis

TOTAL SQUARE FOOTAGE: 6,000 sqft



AREAS WITH SIMILAR SQUARE FOOTAGE BETWEEN 384-405 sqft

This house is spacious and can be modified to create many unique spaces that can accommodate the client's needs.

There is more square footage on the first floor than there is on the second.

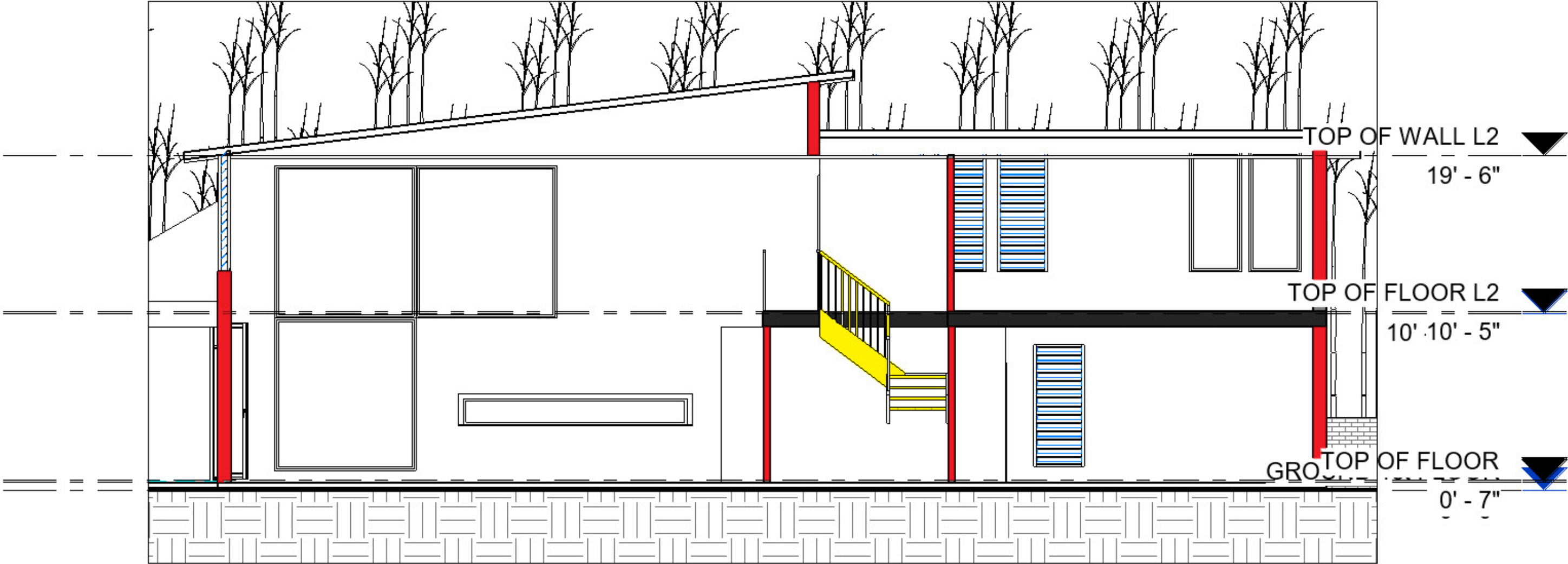
Structural Analysis

The house consists of load bearing walls and non-load bearing walls. There are no columns inside the house.

The walls are constructed from besser block, a concrete masonry unit. (CMU)

There is one flight of stairs leading up to the second floor. It consists of 16 steps.

	WALLS
	PLANES
	STAIRS

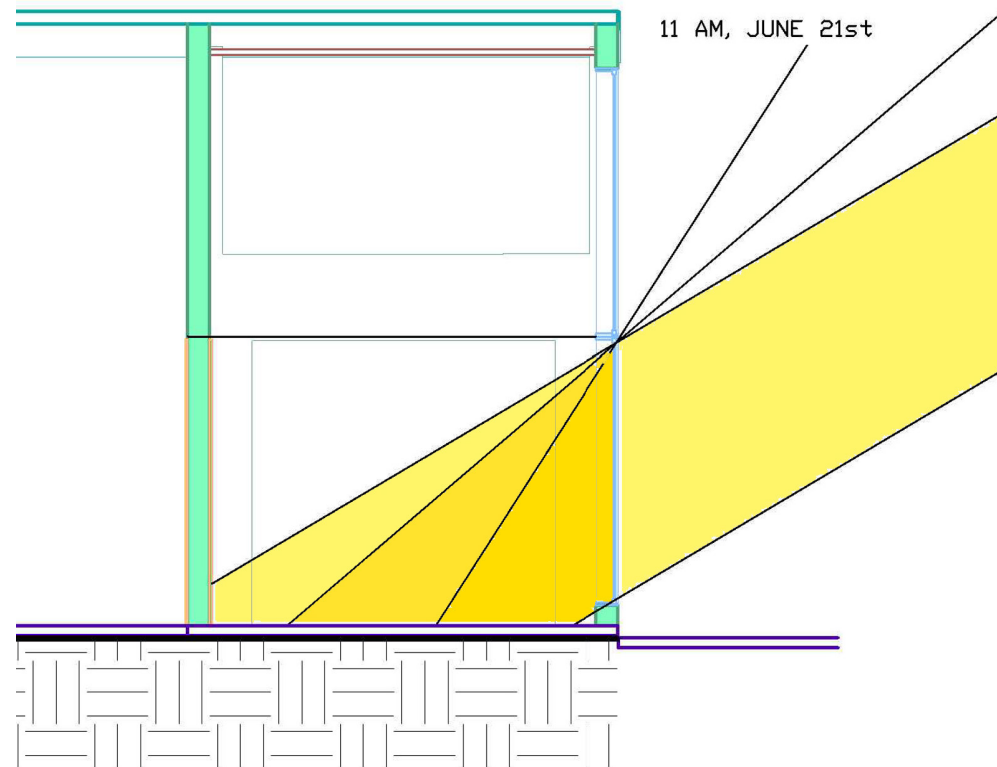


SECTION EAST

Dominant Issues

SUN EXPOSURE

The site experiences a lot of sunlight from the east and west. Considerations to reduce sun exposure would be planting foliage and installing blinds.



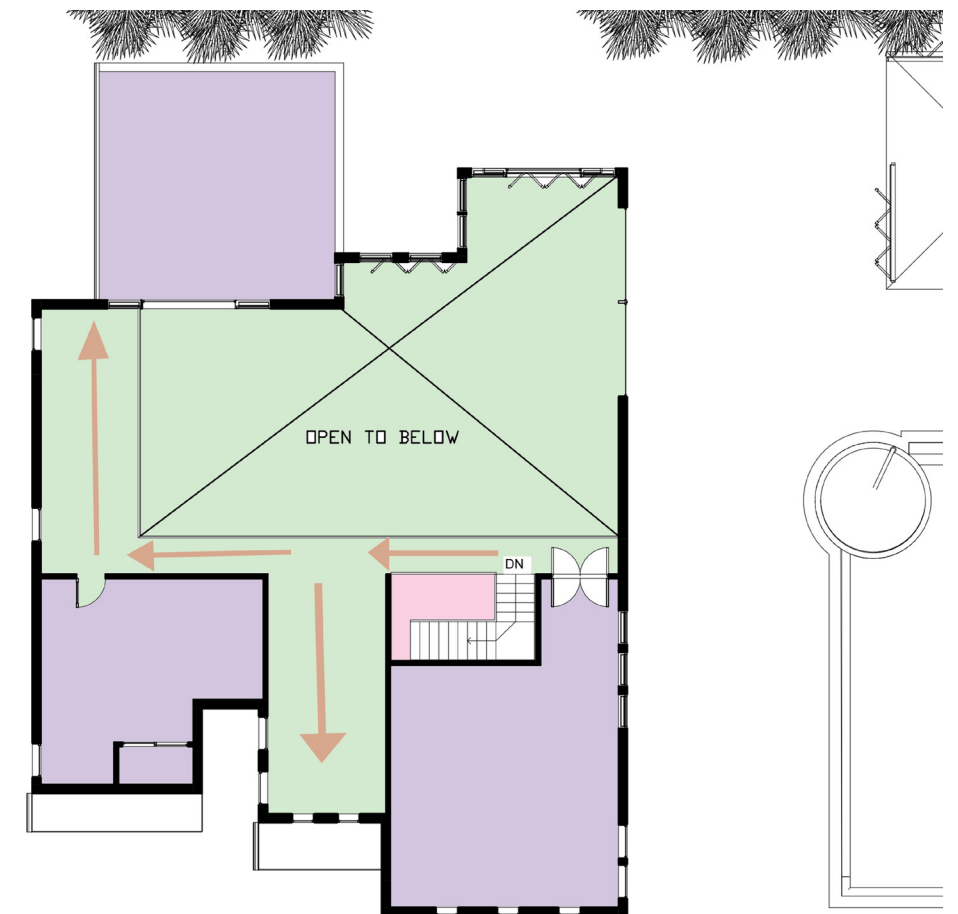
NOISE

There are three major causeways that surround the site. Each direct a considerable amount of noise. Foliage can be implemented to reduce noise.



SPATIAL

The second floor of the house has considerably smaller square footage than the first floor.

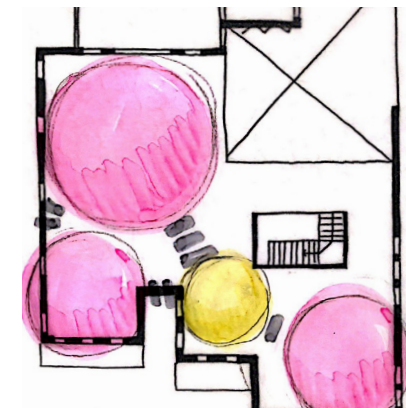
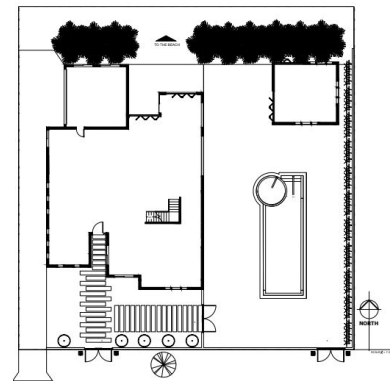
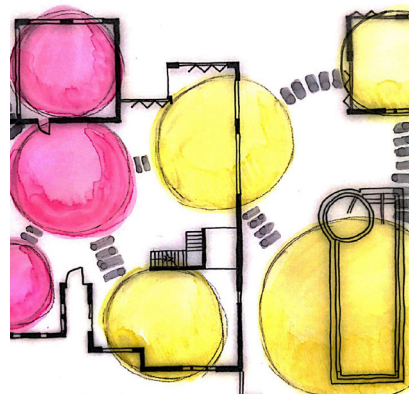


Design Guidelines

1. Considerations to reduce sun exposure would be planting foliage and installing blinds.
2. Foliage can be implemented to reduce noise.
3. Plan spaces and adjacencies to utilize square footage of the home.

The design of the house should utilize all the space given to create the ideal home for our clients. The location of the house is in a beautiful area that can be used to incorporate scenic views for the client. The design should achieve a comfortable living space for the Vega-Parks so that they can enjoy their new home with their friends and family.

A.5 PROGRAM DEFINITION



Introduction

The Vega-Parks are a household that love to cook. They are known for inviting their friends over for large dinner parties. Mateo Vega is a current player for Boca Juniors, a soccer team for Argentina. He is married to Park Tae-Min, an award-winning actor from Korea who enjoys photography.

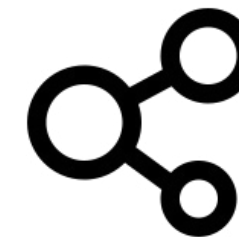
Design Goals

1. Leave the first floor of the house mostly public, while the second floor is all private.
2. Provide enough space to accommodate an indoor gym, kitchen and dining spaces, and an art gallery.
3. Create adjacencies that make sense by studying other residential plans and creating diagrams.



Dominant Aspects of the Program

1. Kitchen and dining space.
2. Outdoor barbeque area with seating.
3. Indoor gym / workout space.
4. Art Gallery.

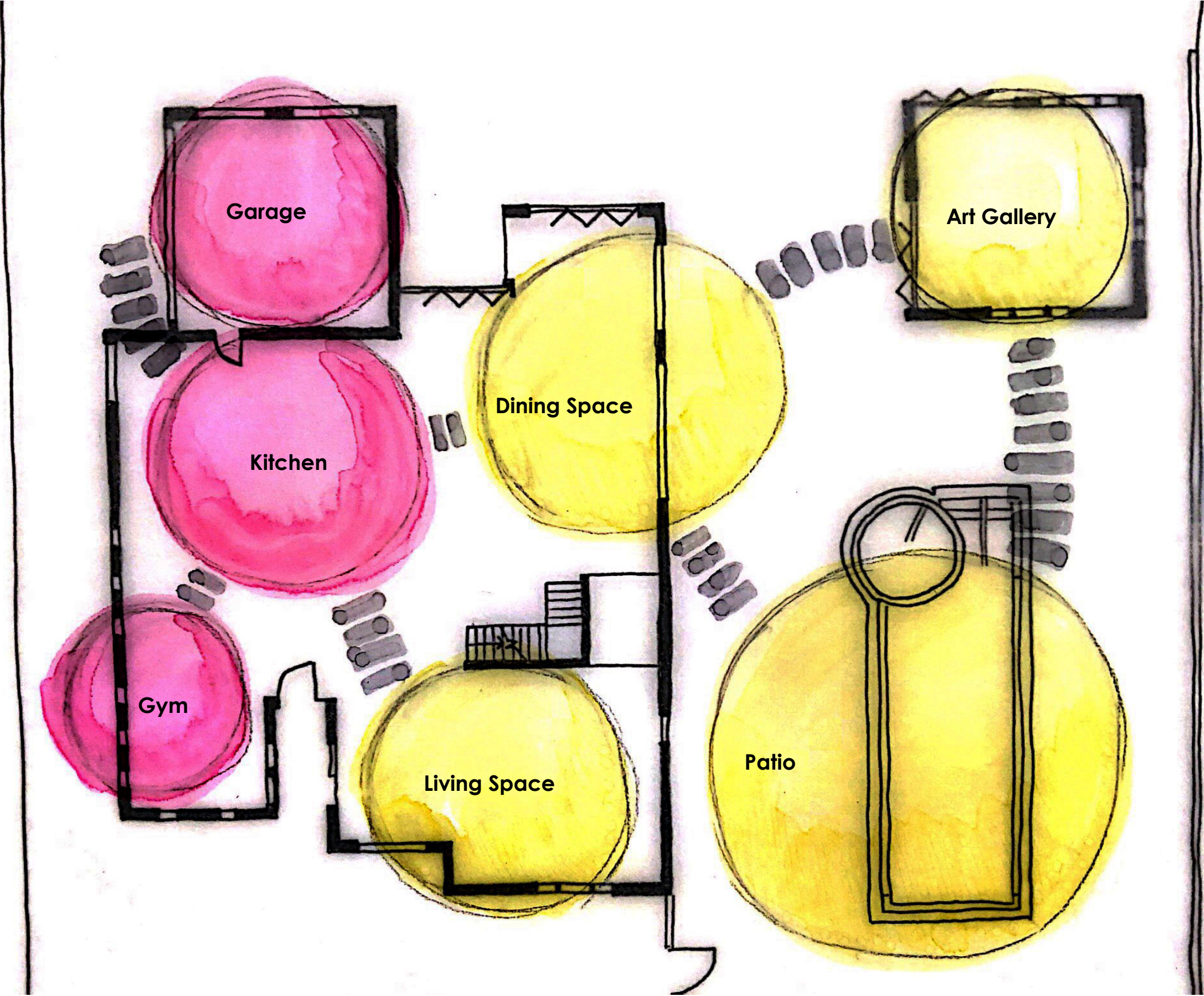


What to Address:

1. Kitchen and dining area must be spacious for guests.
2. Traffic must flow fluidly between spaces to avoid uncomfortable space.
3. The gym should be spacious enough to accommodate for machines and other exercise equipment.





Adjacency: Entire Program 1st Floor

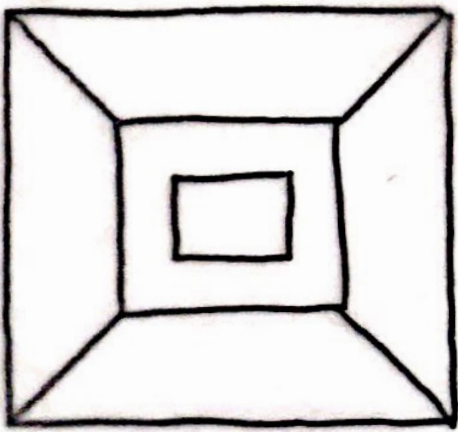
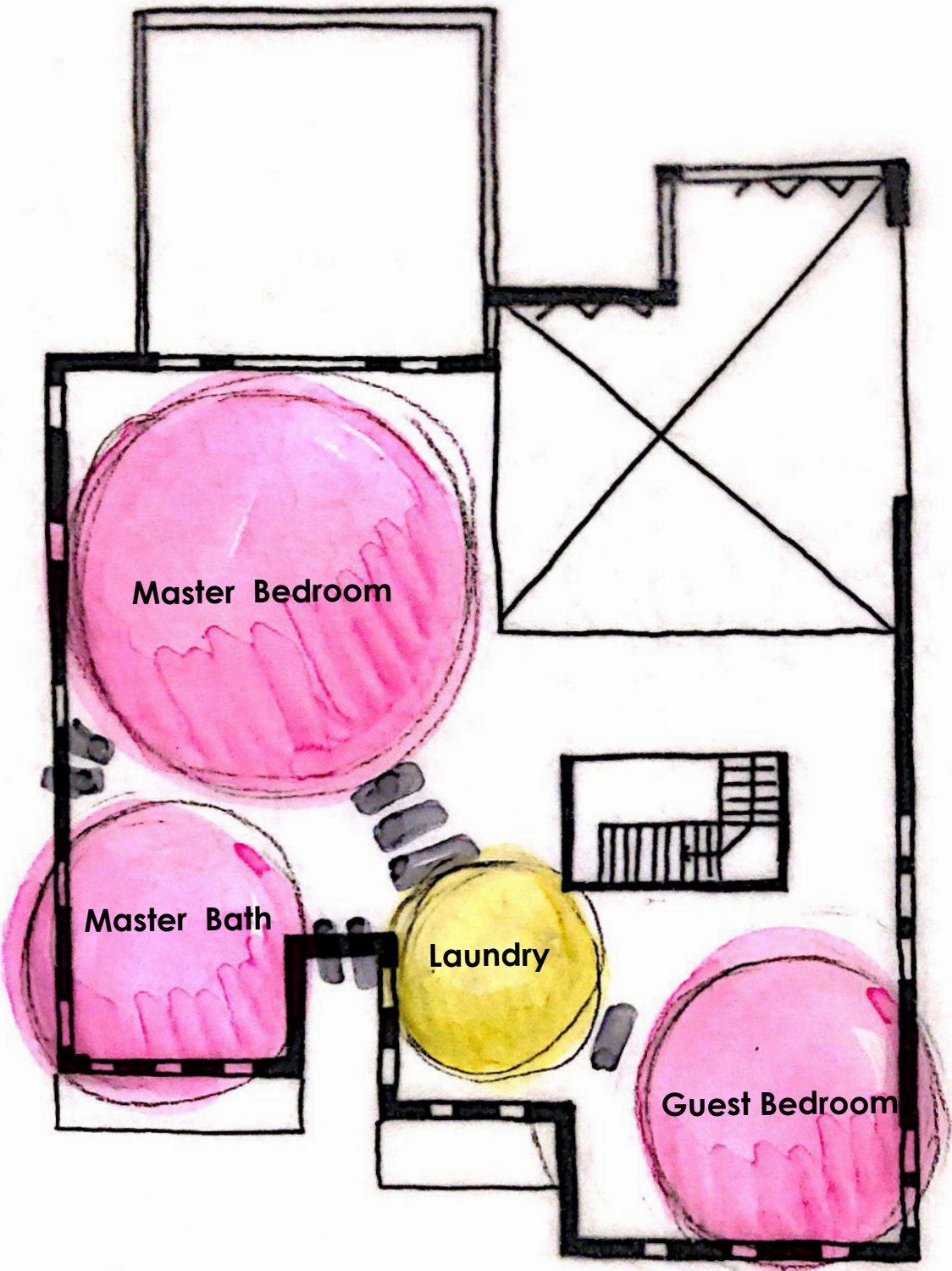


The first floor contains mainly public spaces. They are large spaces that are situated on the east side of the plan.

The first floor is where guests will primarily socialize and interact with the hosts.

	Public Space
	Private Space

Adjacency: Entire Program 2nd Floor



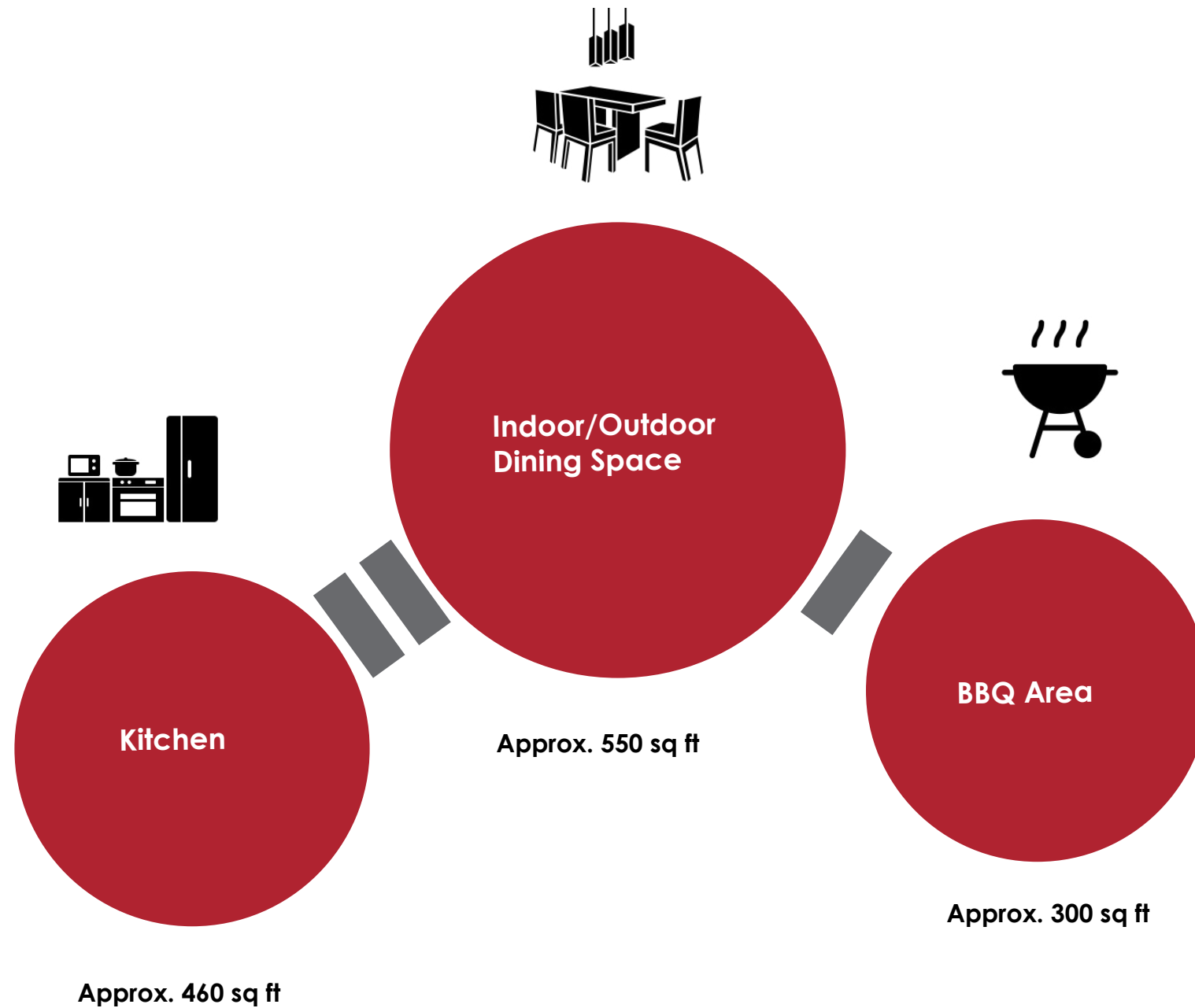
The second floor contains private spaces in the forms of bedrooms and bathrooms. There is an opening in the second floor that reveals the dining area below.

Between the guest room and the master bedroom is a laundry space to wash clothes.

- Public Space
- Private Space

Cooking and Eating Spaces

Total Area: 1310 sqft



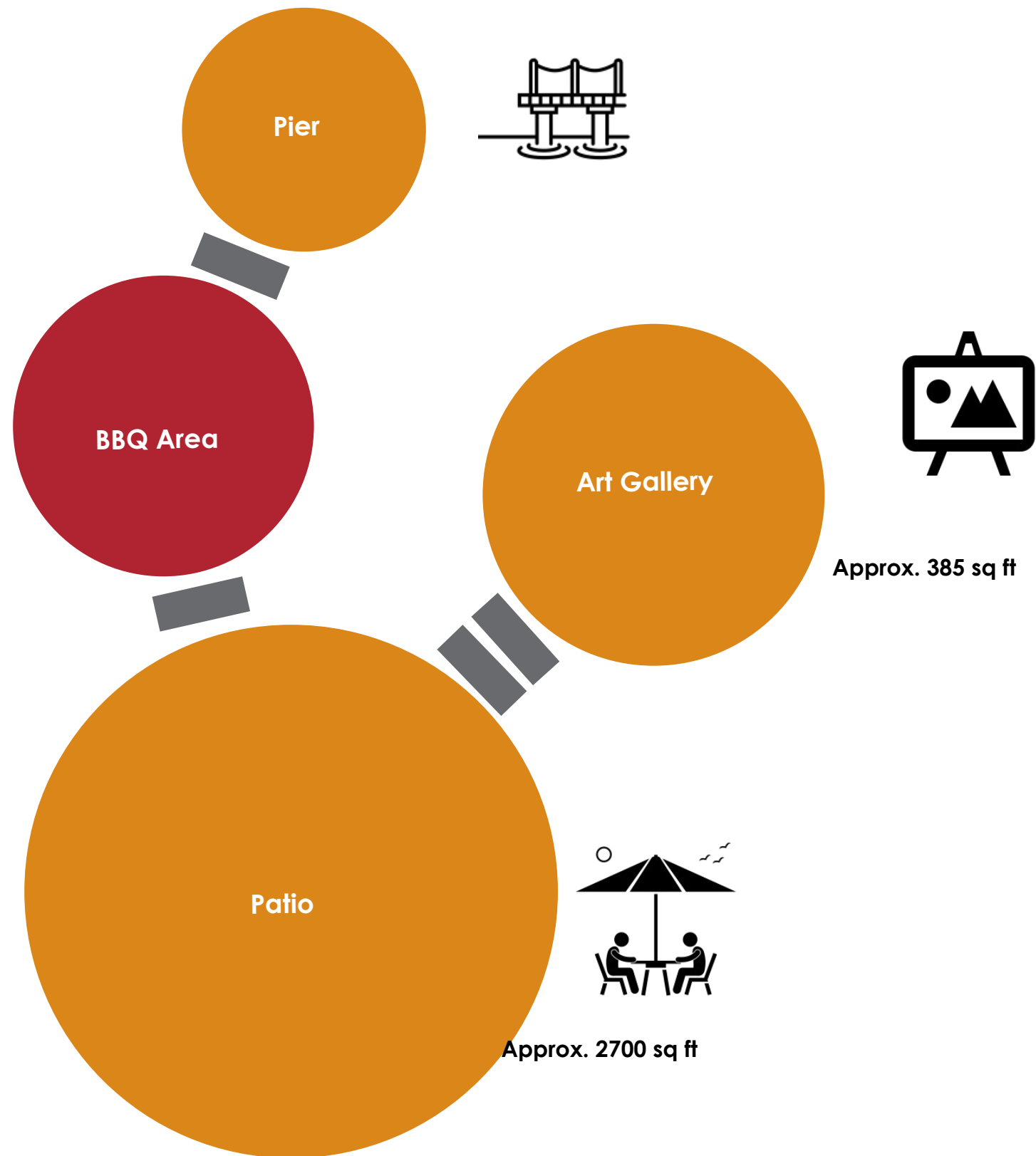
Kitchen: An area in a house that is set aside for preparing and cooking meals. This space should have a work triangle for mobility that is set aside from a main traffic route. Refrigerators, stoves, ovens, sinks, are standard appliances found in kitchens.

Dining Room: A space to gather and eat meals. In the Vega-Park household, this space is large to accommodate many people as well as the dishes prepared. It is the hub of the household, where people can converse over dinner. Included are many chairs for seating and a long, usually rectangular table that fits the prepared meal.

BBQ Area: A place outside for grilling meat, usually over fire. This space will be used to grill Korean and Argentine meats.

Outdoor Activity Spaces

Total Area: 3085 sqft



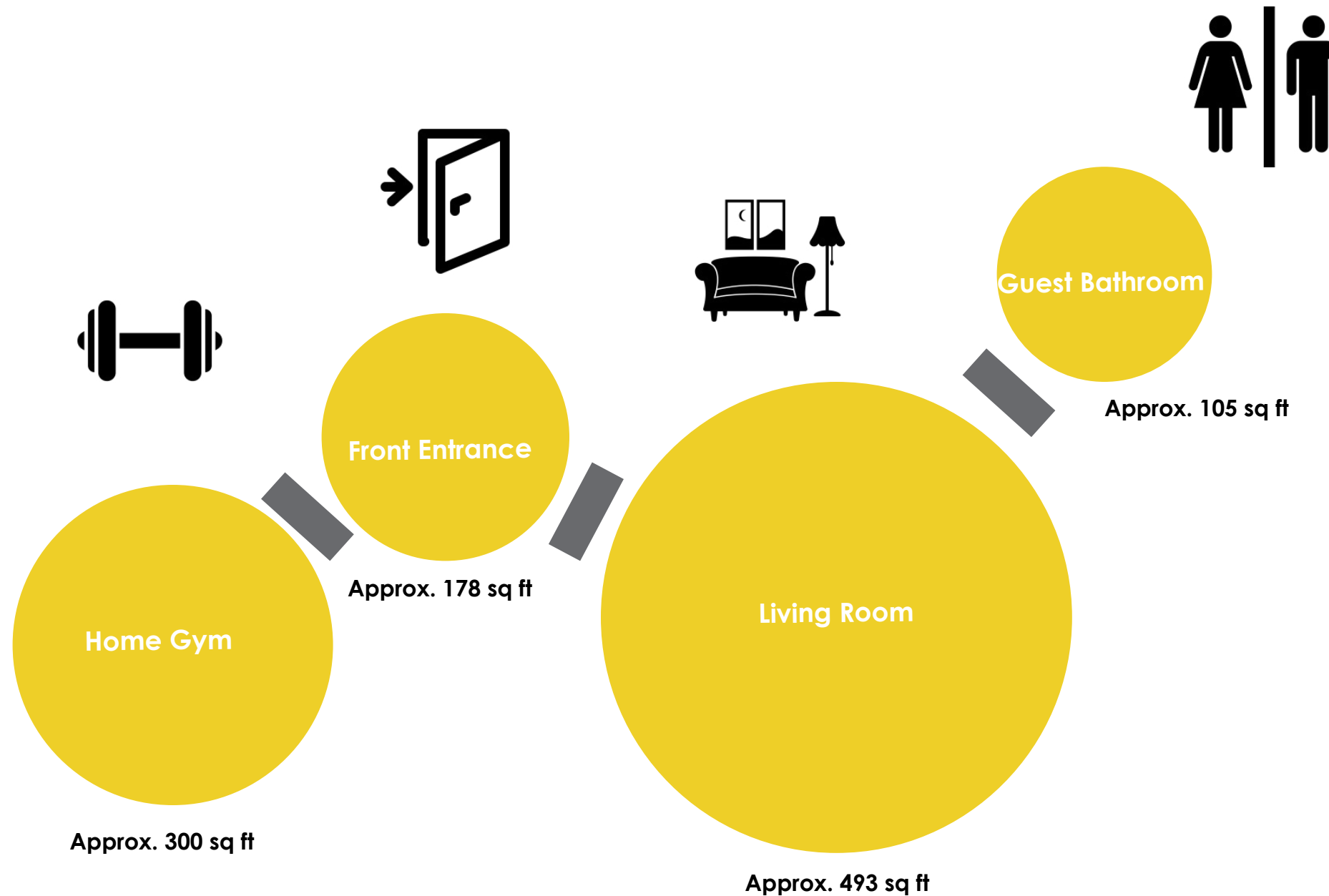
Patio: A paved outdoor area adjoining a house. It is a space for grilling, lounging, and talking with family members and friends. The patio on this site includes a pool, access to an art gallery, access to a BBQ area, and access to a pier. It will have places for eating and relaxing and include outdoor furniture.

Art Gallery: A place to display art. The Vega-Parks enjoy collecting and viewing art. Tae-Min studies photography as a hobby.

Pier: A pier is a structure that connects land to docked boats. The pier on this site leads to a view of the Intracoastal Waterway and can act as a spot for fishing and boating activities in Miami.

Living Space First Floor

Total Area: 1102 sqft



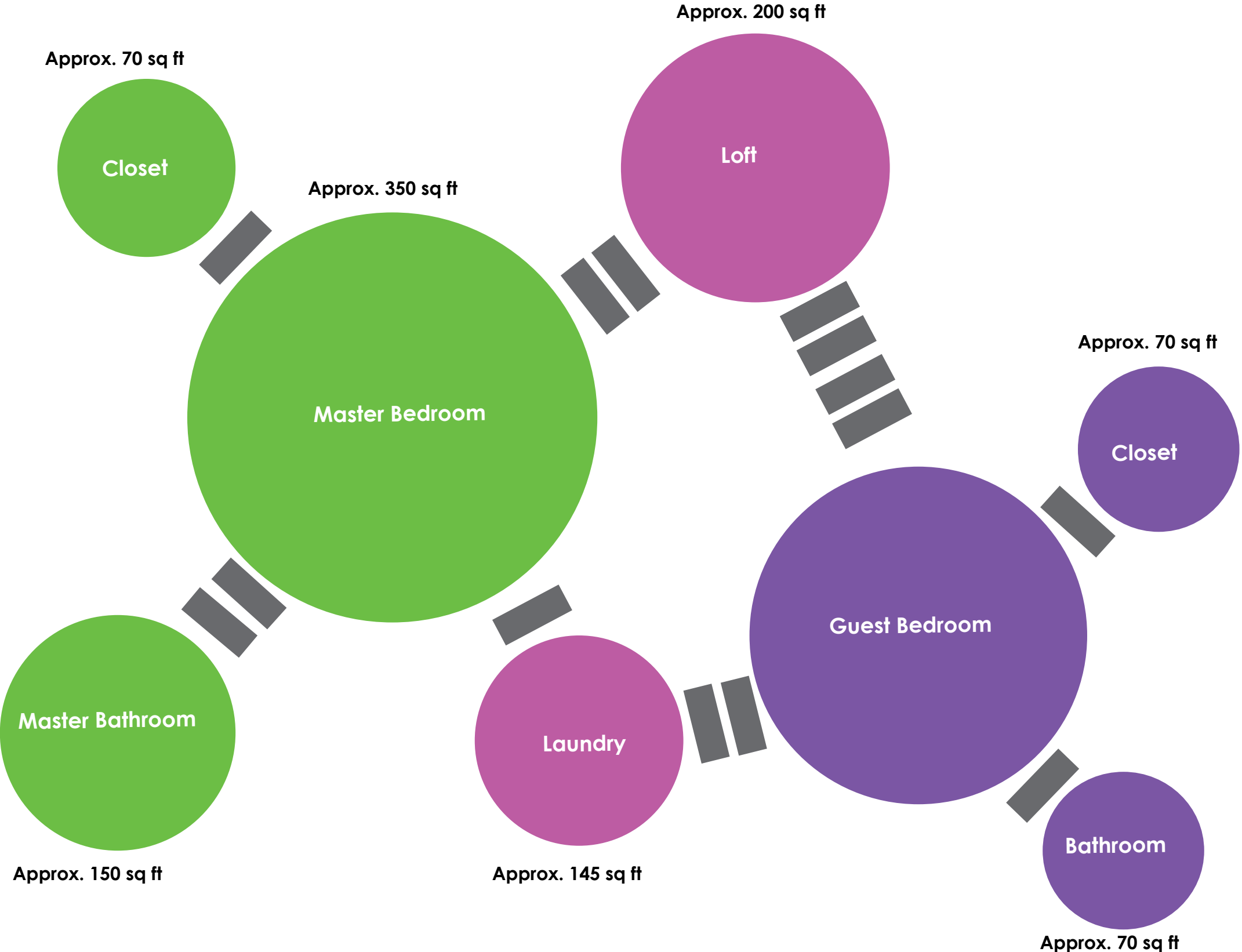
Living Room: A large space in a home that is used for general and informal everyday use. It is typically one of the largest spaces in a house, and includes furniture such as couches, small places for dining, and a stereo system. It should provide access to a guest bathroom and offer no direct views to private spaces.

Guest Bathroom: Smaller than a master bathroom, the guest bathroom is easily accessible and close to spaces that involve socializing. This bathroom will be located behind the stairs so that it is tucked away and out of view.

Home Gym: A home gym requires at least 200 sq ft to fit machinery and other exercise equipment. For the Vega-Parks, the home gym will assist with Mateo's athletic lifestyle.

Entry: Introduces guests to the basic layout of the house and is the start of the circulation path.

2nd Floor Adjacencies



Master Bedroom: This space will include a walk in closet as well as a spacious bathroom. The back wall where the bedrest will go should be about 13-16' to allow for a king size bed and enough space for two large countertop tables. It will be located on the west of the property.

Guest Bedroom: This room, albeit smaller, will serve as extra storage as well as a place for guests to stay. The layout has the room to the east side of the property, and it comes with a bathroom as well as a closet.

Laundry Room: A place for washing clothes that should be big enough for a washer and dryer machine, as well as a sink. This room will be inbetween the master and guest bedroom.

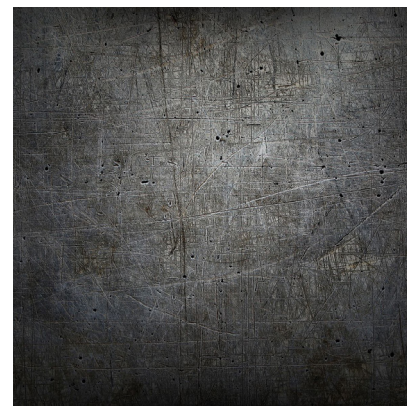
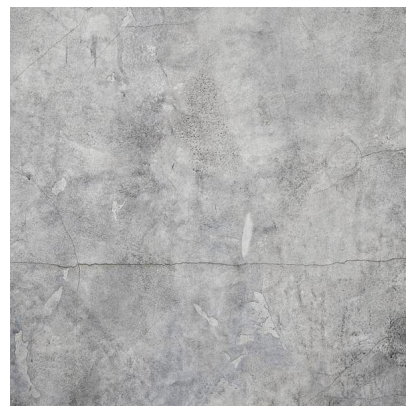
Loft: A place for storing things, usually on the second floor. This place will be converted into a lounge area.

Design Guidelines

1. Leave the first floor as an open plan, as it contains spaces meant for socializing and gathering.
2. Make the second floor exclusively private (closed plan), meant for bedrooms and utility rooms.
3. Place the kitchen next to the garage for easy access to storage.
4. Give at least 200 sq.ft for the indoor gym area to accommodate for equipment.
5. Use outdoor spaces for a barbecue area and a lounge for relaxing.

The design should keep in mind that the Vega-Parks love to invite friends and family over to eat. Therefore, the connection between the kitchen, dining, and living rooms will be open so that the circulation does not stop. Since the second floor contains a smaller amount of square footage and narrow areas, it will be used to create bedrooms for the Vega-Parks and their guests, as well as a laundry room and other utilities.

A.6.1 DESIGN CONCEPT



A.6.1 DESIGN CONCEPT

DNA WORDS

Industrial
Simplistic
Comfortable

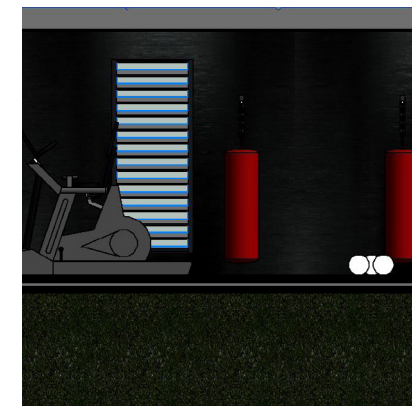
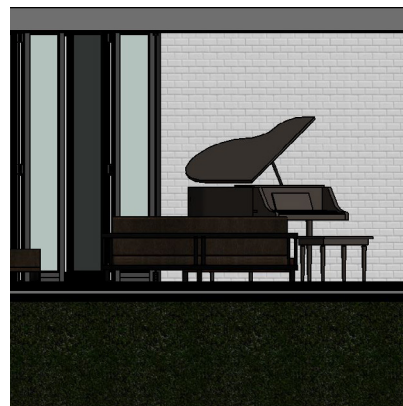
DESIGN GUIDELINES

1. Use industrial materials (wood, concrete, metal and brick) and furniture to create a simple, bold look that reflects the Vega-Park's settled lifestyle.
2. Use lighter materials to create simple and elegant spaces, such as the master bedroom and living room.
3. Use darker materials for more private spaces such as the master bathroom and the gym.

How I plan to incorporate the A.1 and A.2 projects into the design is by setting aside an area for an art gallery and by using the Roman Vlasov inspired chair as a collectible piece to be displayed in said gallery.

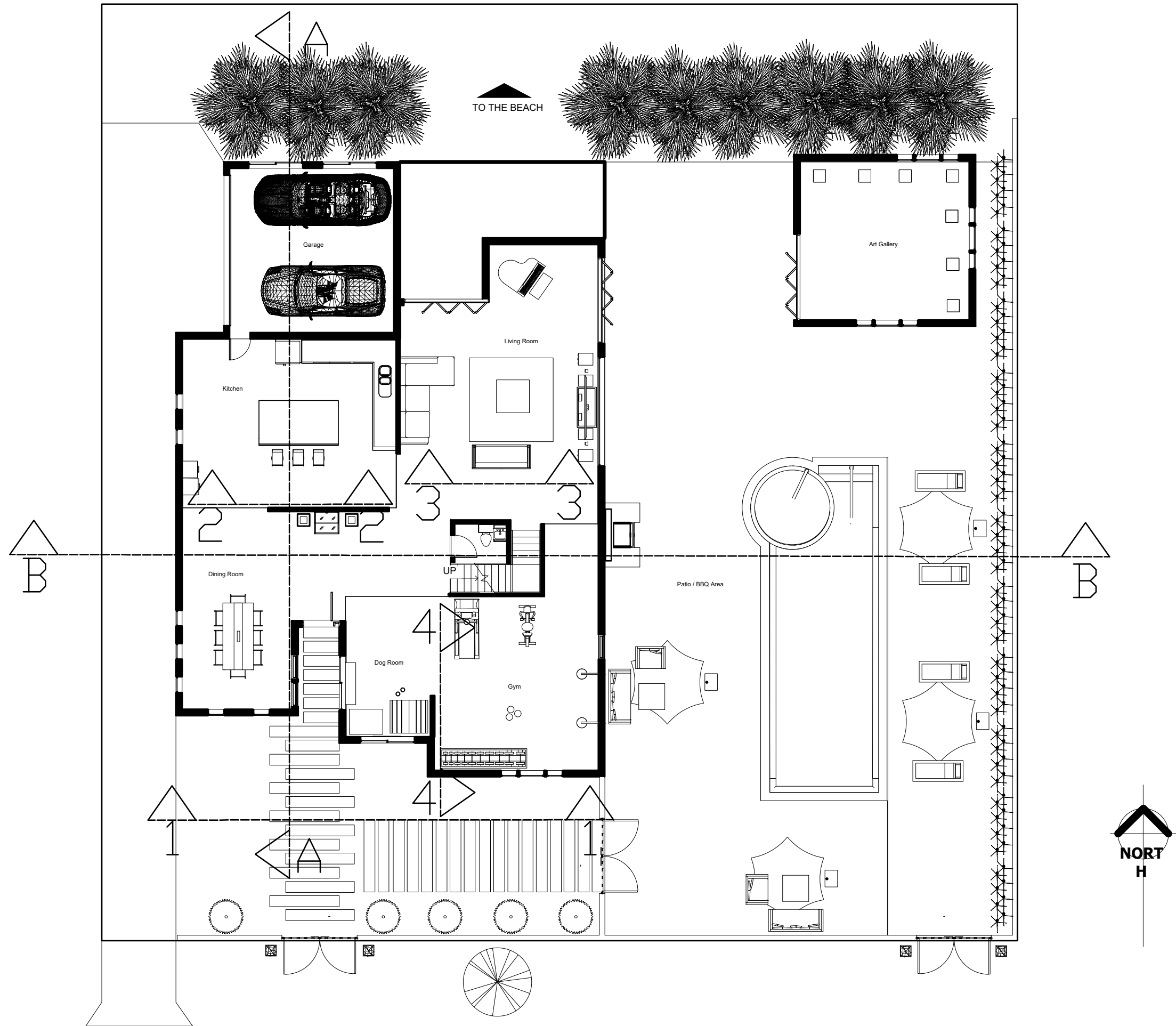


A.6.2 SPACE PLANNING



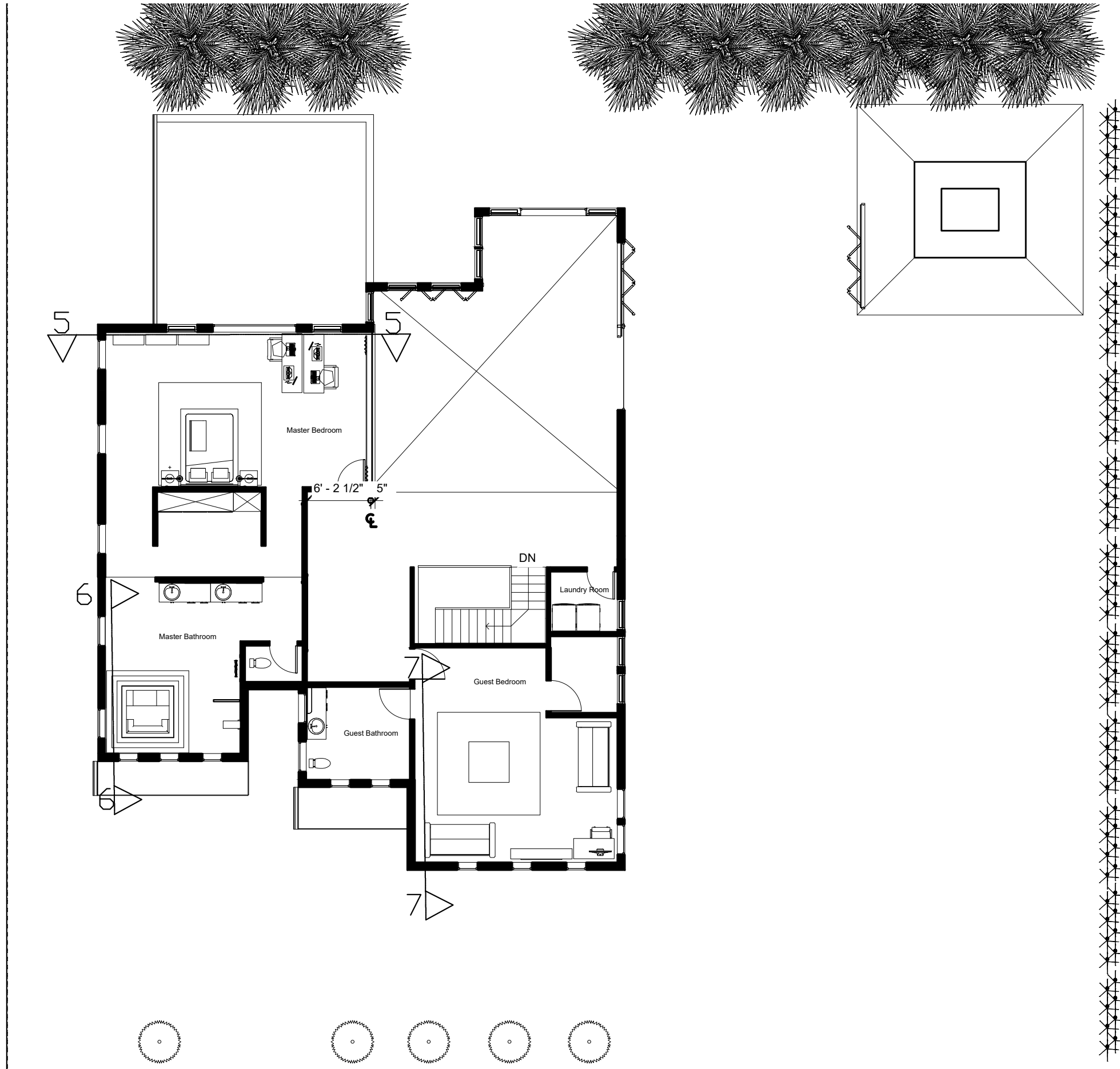
FF&E PLANS

FIRST FLOOR



FF&E PLANS

SECOND FLOOR



ELEVATIONS FIRST FLOOR

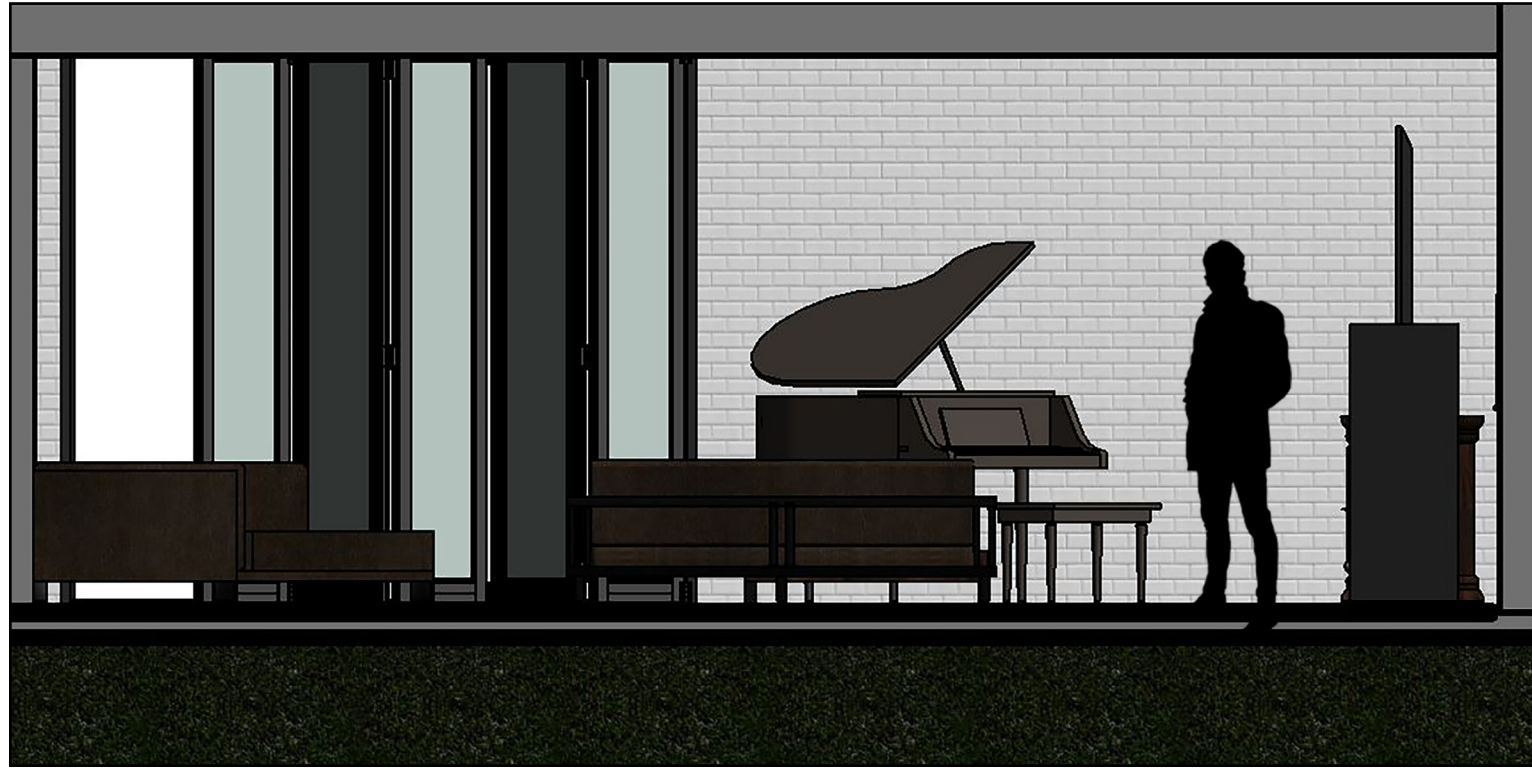


1: HOUSE FRONT

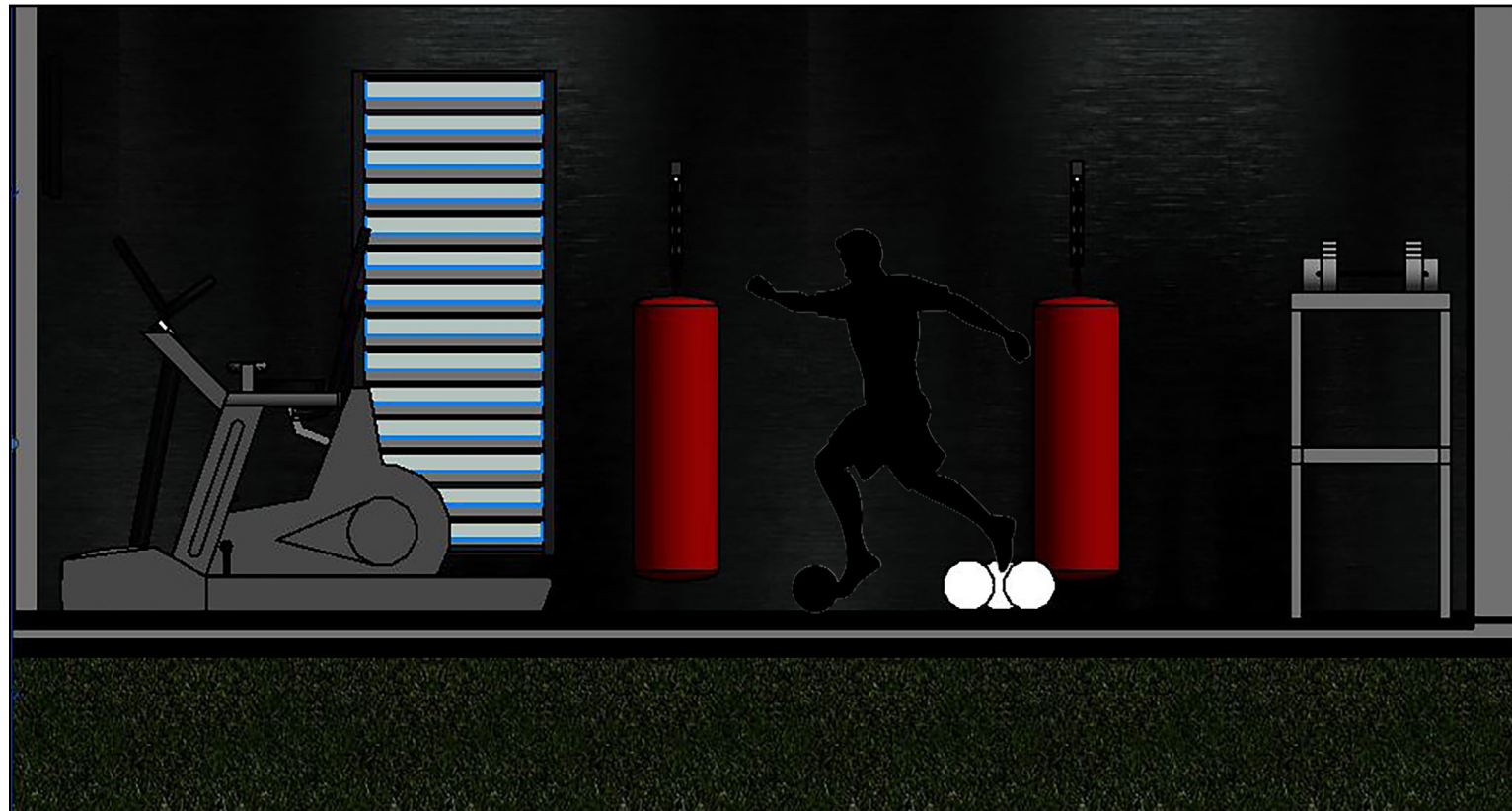


2: KITCHEN

ELEVATIONS FIRST FLOOR



3: LIVING ROOM



4: GYM

ELEVATIONS SECOND FLOOR

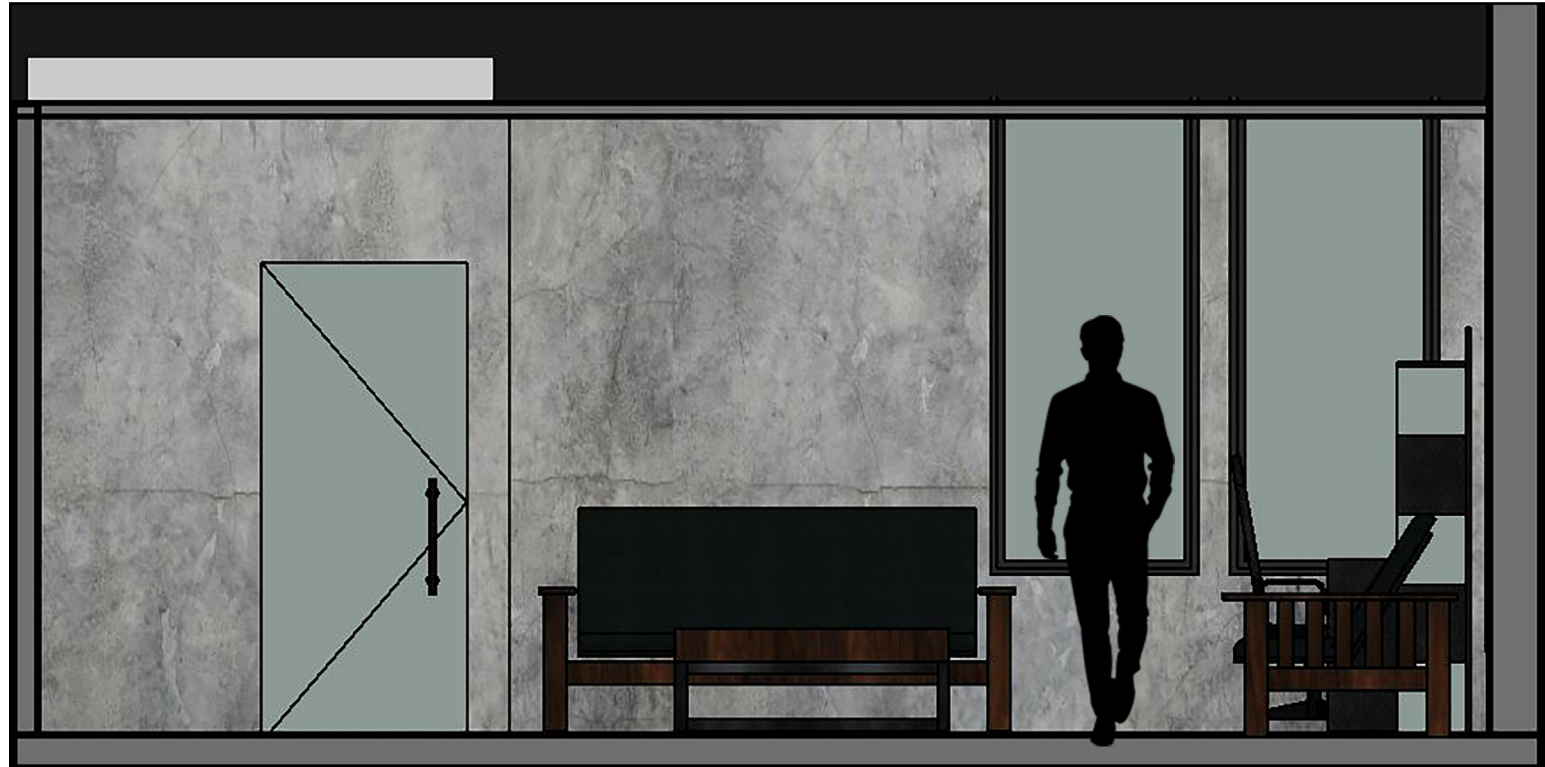


5: MASTER BEDROOM



6: MASTER BATHROOM

ELEVATIONS SECOND FLOOR



7: GUEST BEDROOM

TRANSVERSAL SECTION



LONGITUDINAL SECTION



RENDERED PERSPECTIVES

HOME GYM



RENDERED PERSPECTIVES

KITCHEN



RENDERED PERSPECTIVES

MASTER BATHROOM



RENDERED PERSPECTIVES

MASTER BEDROOM



REFERENCES

Wikipedia

Noun Project

Google

RevitCity.com

BIMobject

Shaping Interior Space- Roberto J. Rengel

Google Maps

<https://www.esrl.noaa.gov/gmd/grad/solcalc/azel.html>